

MKBeton Co. (PJS)

Prefabrication Solutions



MKBeton Co. (PJS) – Tehran

Precast Company:

- **Precast/Prestressed Structures**
- **Special Structures**
- **Mold Design/Fabrication**
- **Architectural Elements**



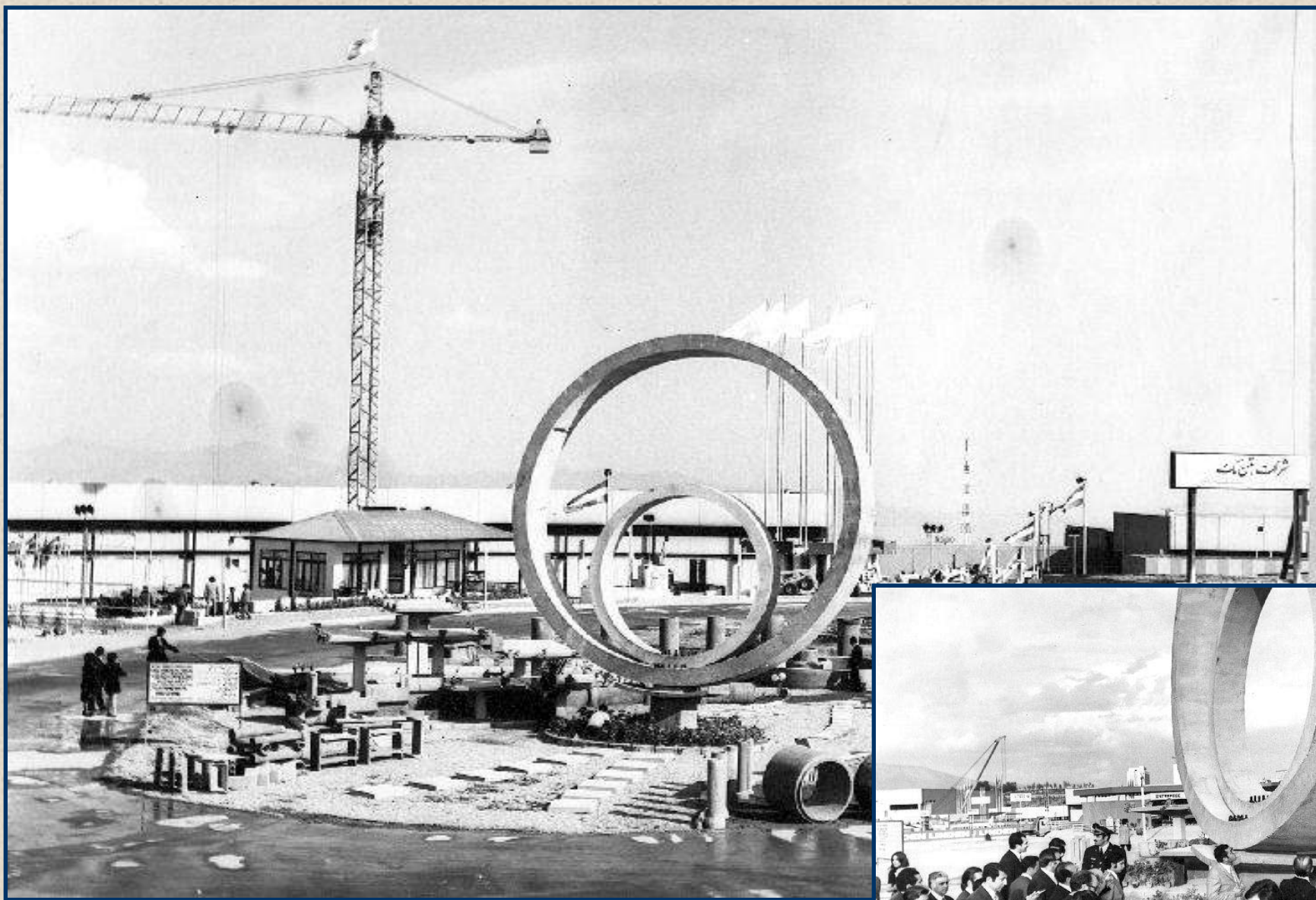


- **Nearly 60 years of Experience - Since 1963**
- **Privately Owned**
- **Most Reputable (Iran)**



- **Highly Regarded Engineering Credentials**
- **Collaboration with top Level Experts, Research Institutions and Engineering Firms**
- **Bearer of International Patented License (Vacuum Concrete)**
- **Bearer of National Certificates for Two Prefabricated Structural Concepts/Systems (In Production)**
- **Completed Numerous Projects in National Levels**
- **Fully Successful in All Projects**





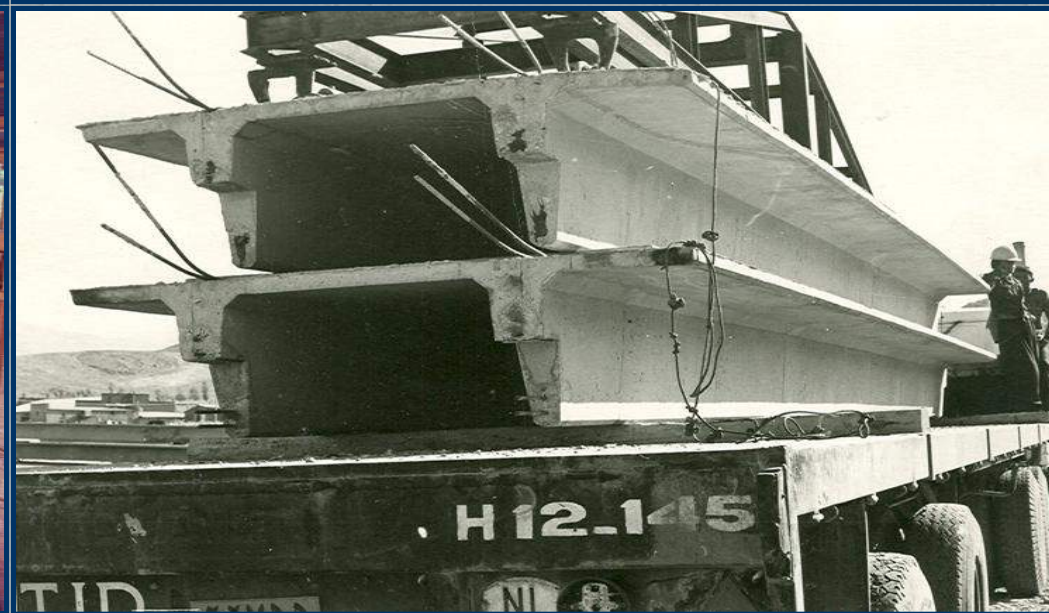
International Exhibition Tehran - (1971)



Google Earth

MK Beton Factory from Space

Tehran - Shahriar (2005)



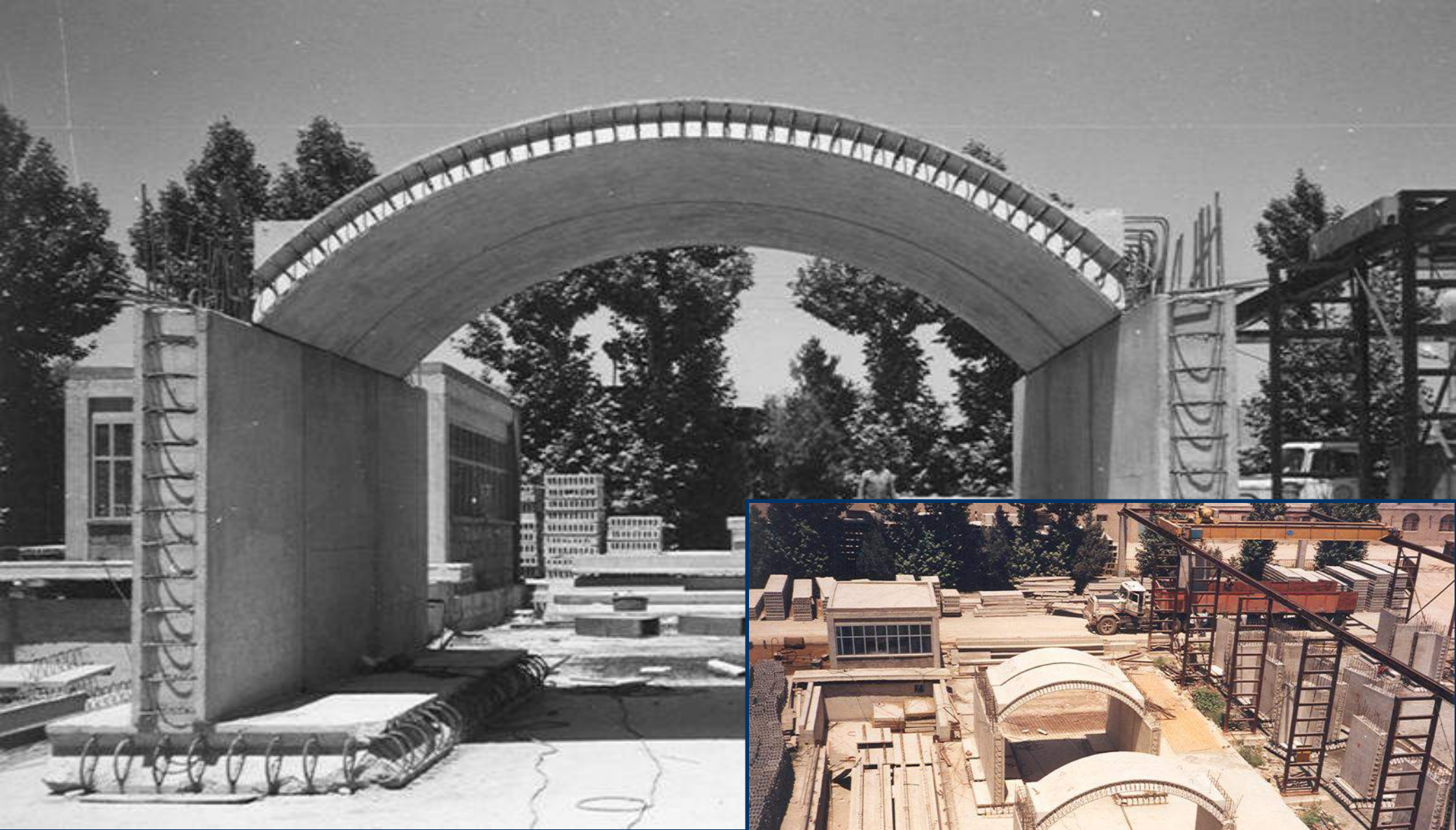
**Water Distribution Fittings 20'000 m³ Various
Precast Concrete Elements Rasht (1972-
74)**

**10 m long TTs – 40'000 m²
Tehran Equestrian Arena (1975-76)**



Precast Facades 450'000 m²

Ekbatan Complex (1975-77) Near Tehran Airport



Blast-Safe Shelters/Hospitals

14 Structures each 3000 m²



Numerous Bridges (1975 - 1993)

4 to 22 m long Precast I-Beams

Up to 35 m long Prestressed Girders



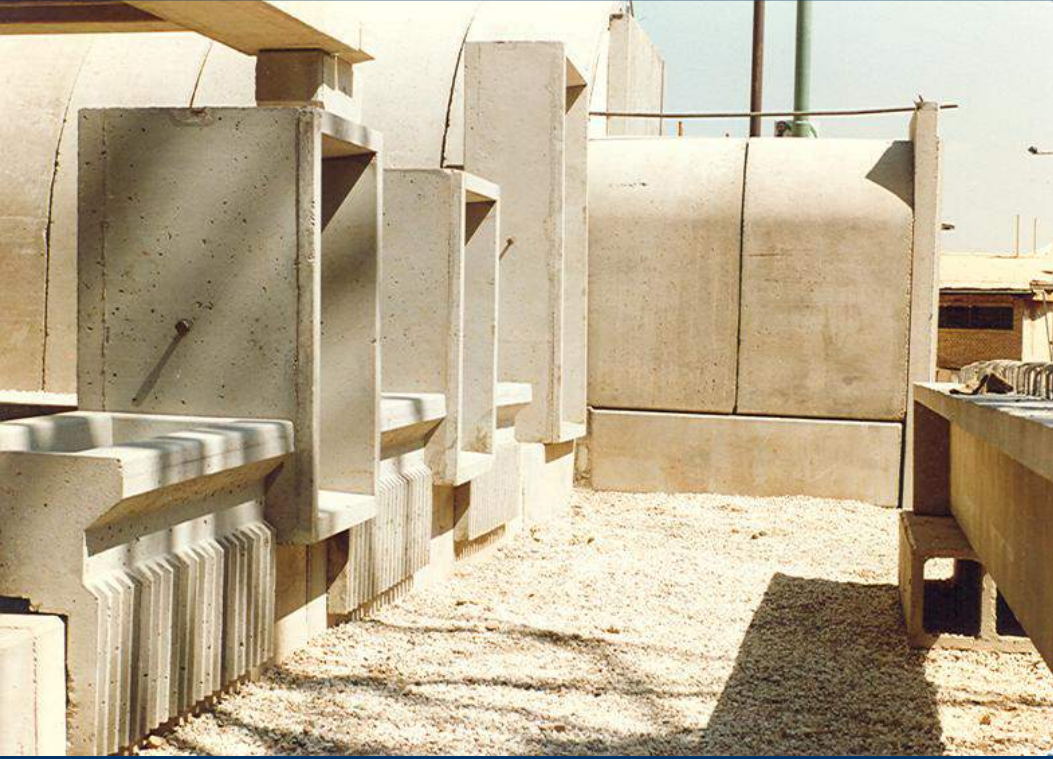
Large 22 m I-Beam

MKBeton Production Plant (1992)



Prefabricated Parking Structure

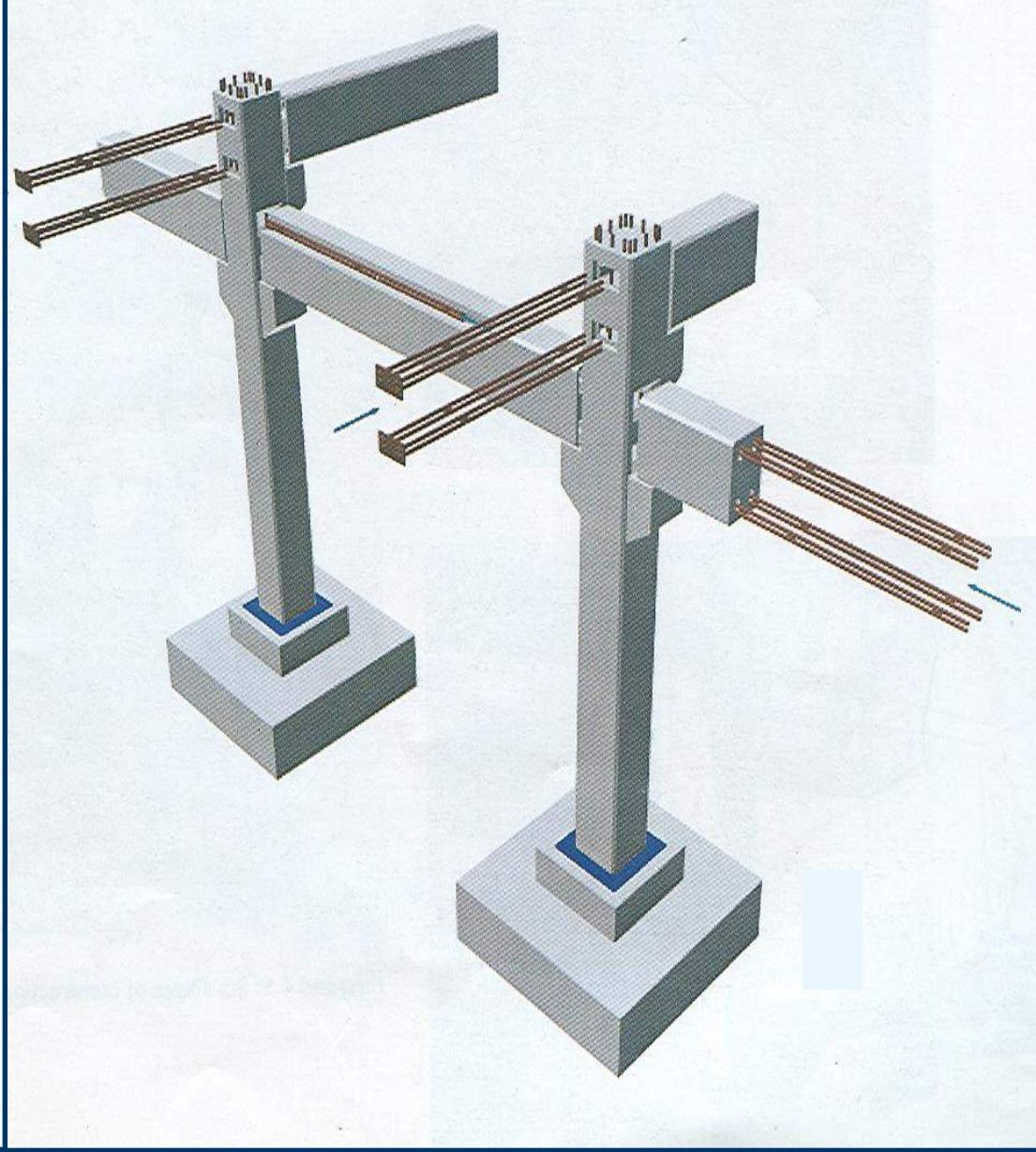
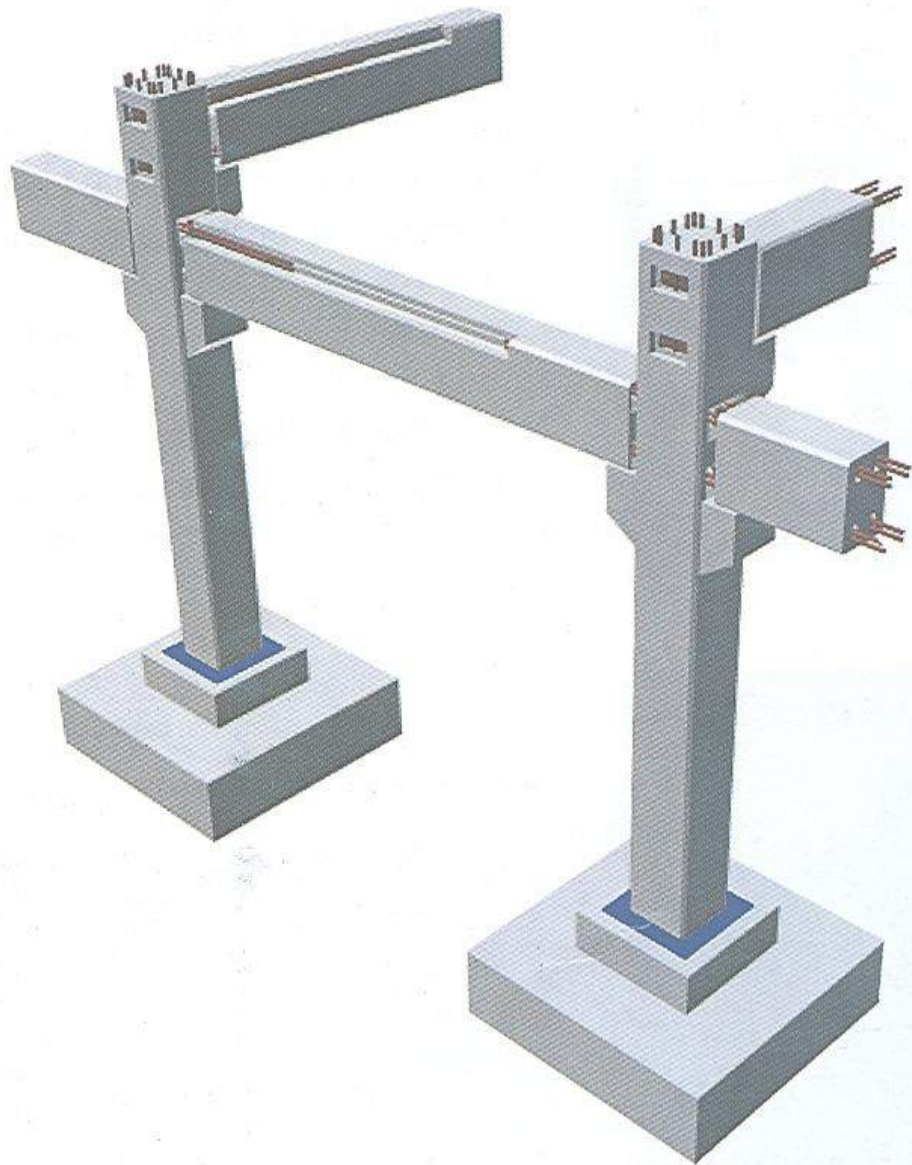
Payambar Hospital - Tehran (1990)



**International Exhibition Tehran
(1989)**

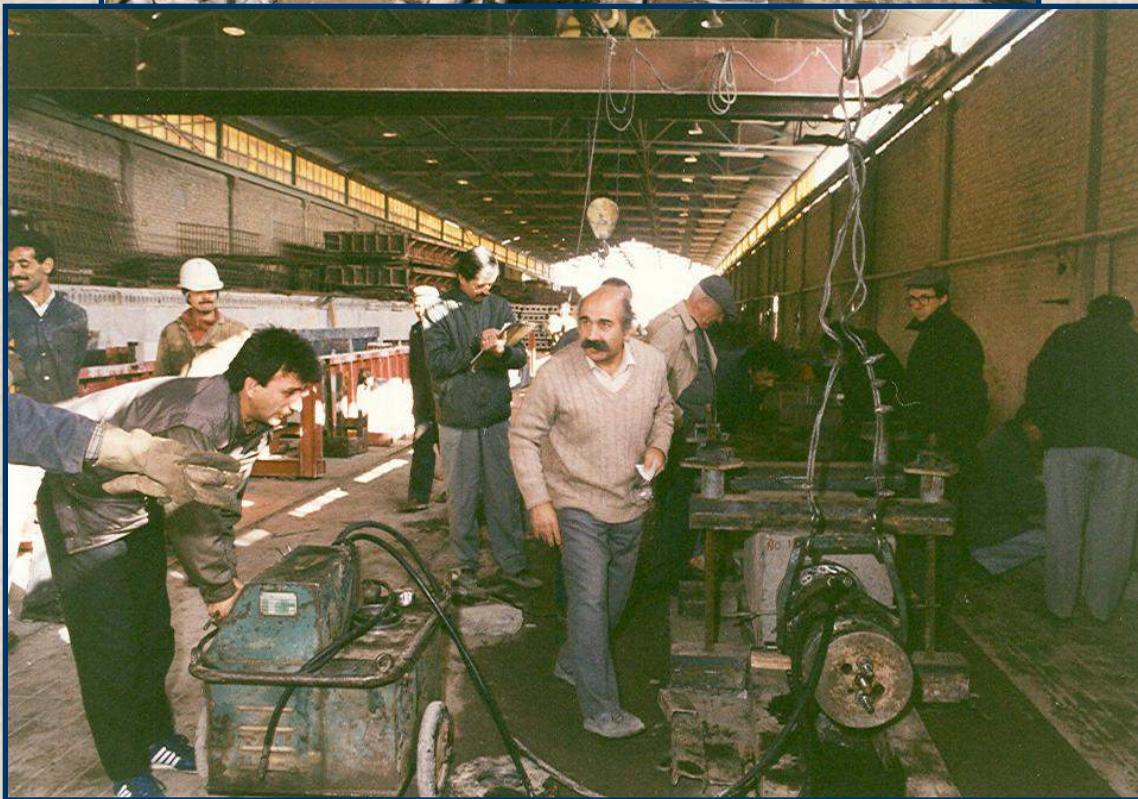
**International Exhibition
Tehran- (1991)**





Precast Refinery Pipe Racks 150'000 m² – Post Reinforcement Concept

Bandar Abbas (1992-93)



**Precast Refinery Pipe Racks
Mechanical Testing**

MK Beton Factory (1992-93)



Precast Refinery Pipe Racks 150'000 m²

Bandar Abbas (1992-93)



Precast Refinery Pipe Racks 150'000 m²

Bandar Abbas (1992-93)



Precast Façades 50'000 m²

Milad Hospital Tehran (1992-1996)



Precast Façades 50'000 m²

Milad Hospital Tehran (1992-1996)



Precast Tetrapod Production Line
Assalouyeh (2000)



Precast Caisson
Automated Molds
Assalouyeh (2000)

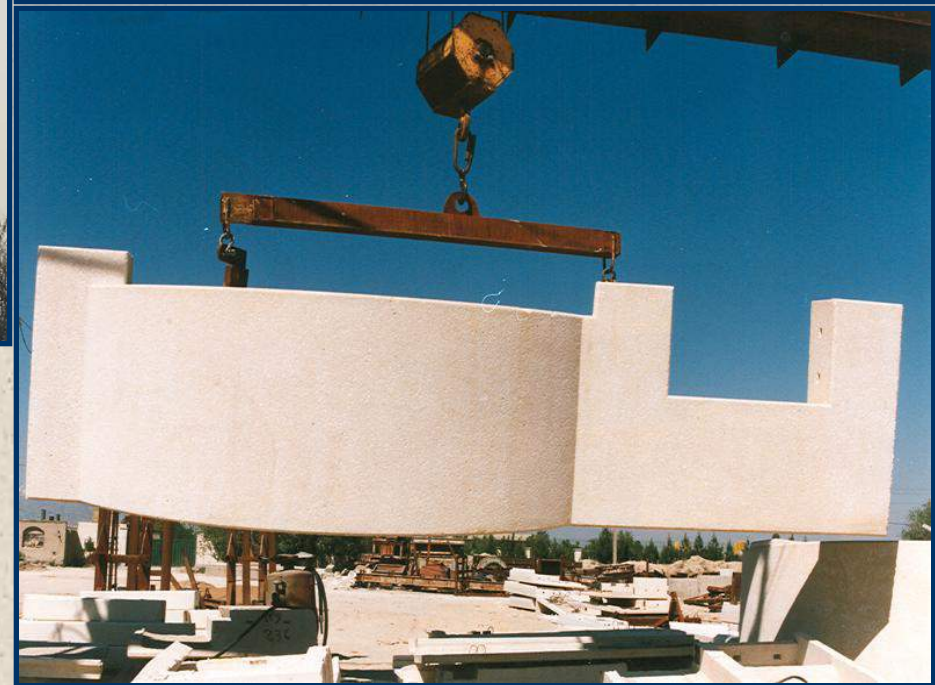


**Precast Caisson
Production Line
Assalouyeh (2000)**



Large Concrete Truss 16 m by 3.2m – 36Tons

Mazandaran Resort Complex (2001)



Kashanak 22 Stories Twin-Towers Facades

Tehran (2002-2004)



**Five Towers - 12 - 16 Stories 50000
m² of Façades**

Sohanak Tehran (2003-2004)



**Park 1 Towers
Façade (Flower Boxes)**

Adjoudanieh Tehran (2004-2005)



Traffic Tunnel Precast Lining and Façades
45000 m²

Ressalat Tunnel - Tehran (2006)



Traffic Tunnel Precast Lining, Junction Bridges and Facades
45000 m²

Ressalat Tunnel - Tehran (2006)



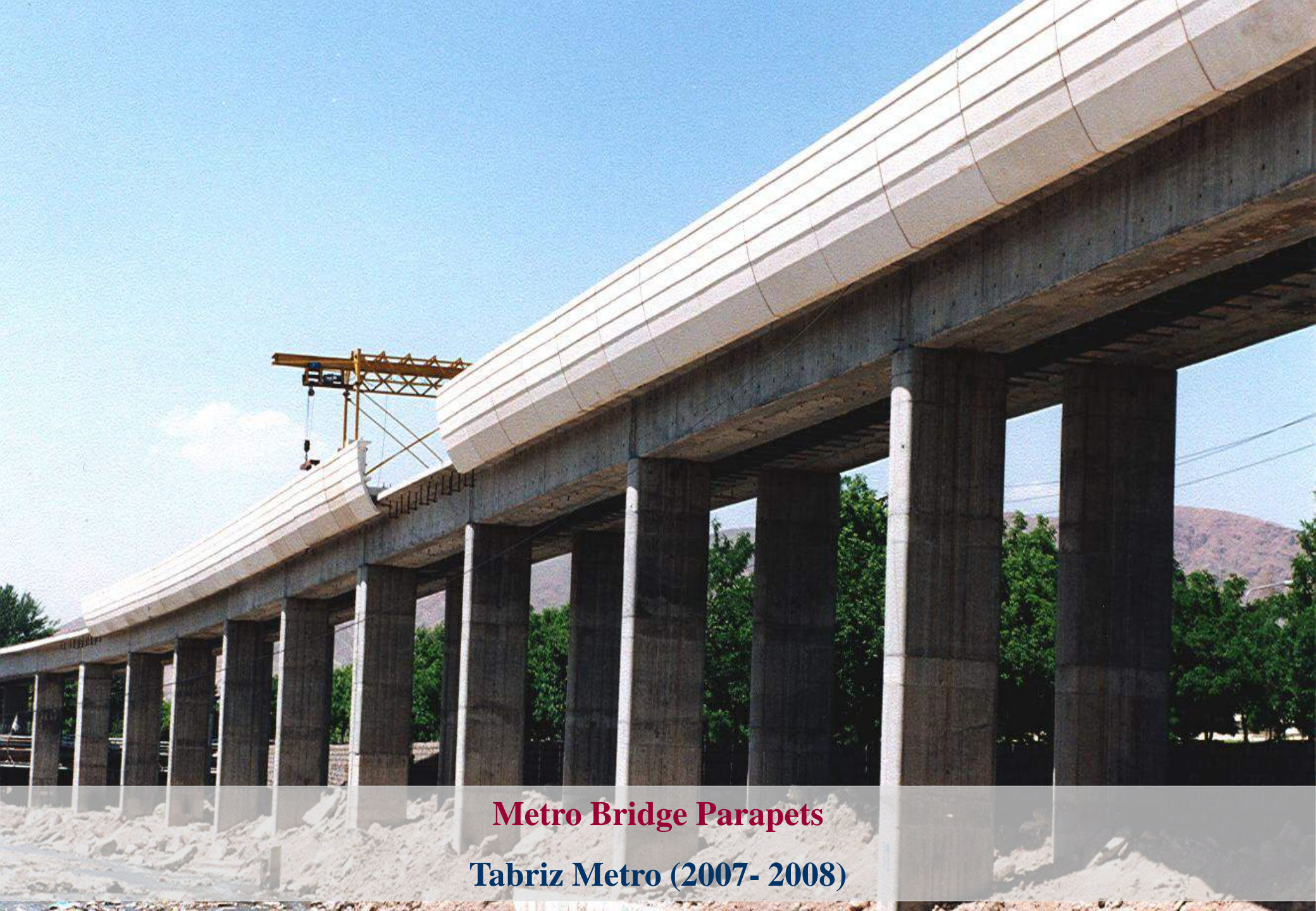
Tehran Tower - Architectural Elements
Façades & Flower Boxes - Tehran (2006)



**Tehran Tower
Architectural Elements
Façades & Flower Boxes**

Tehran (2006)





Metro Bridge Parapets
Tabriz Metro (2007- 2008)



Hormozal Smelter Precast Structure
Anode Baking Kiln
Bandar Abbas (2007)

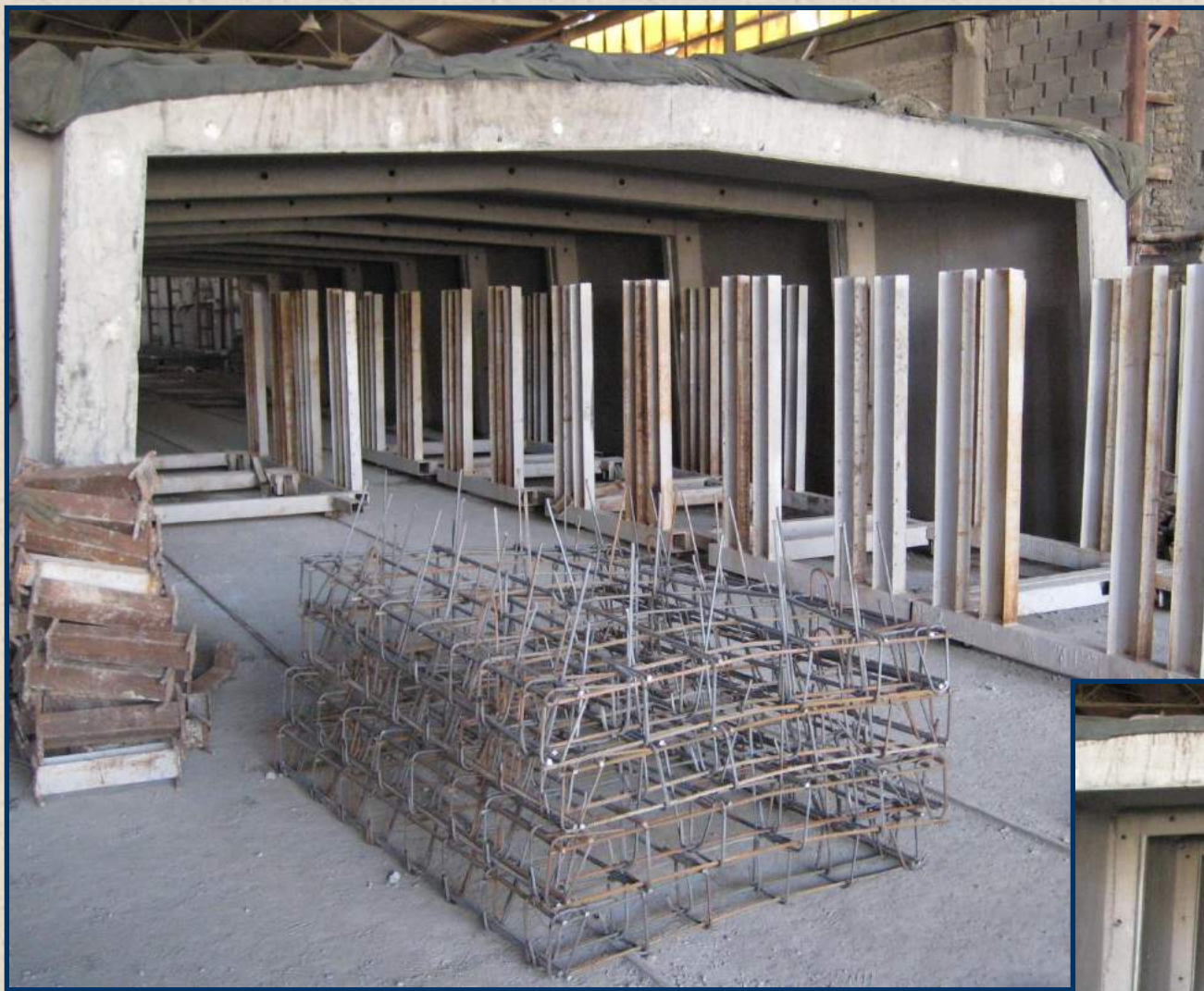


Hormozal Smelter Precast Structure
Anode Baking Kiln
Bandar Abbas (2007)



Hormozal Smelter Precast Structure
Anode Baking Kiln
Bandar Abbas (2007)





Active Controlled Steam Curing Tunnel
MK Beton Factory

Tohid Tunnel - Tehran (2008 – 2009)





**Portable Production Line with
Automated Steam Curing Tunnel**

Tohid Tunnel - Tehran (2008 – 2009)



Traffic Tunnel Precast Elements Production

Tohid Tunnel - Tehran (2008 - 2009)



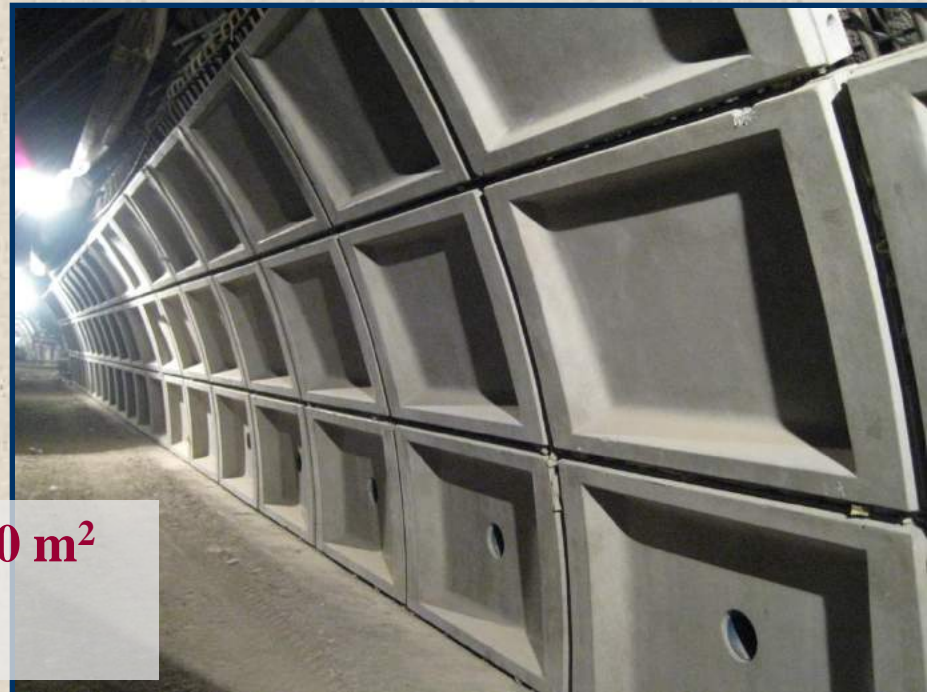
Traffic Tunnel Precast Elements

Tohid Tunnel - Tehran (2008 - 2009)



Traffic Tunnel Precast Lining, Façades and Ducts
85000 m²

Tohid Tunnel - Tehran (2008 - 2009)



Traffic Tunnel Precast Lining as Waffles - 60000 m²

Tohid Tunnel - Tehran (2008 - 2009)



Erection Equipment

Tunnel - Tehran (2008 - 2009)



Tohid





**Traffic Tunnel Precast Lining as Waffles - 60000 m²
Finishing and Coating Stage at MKBeton Factory**

Tohid Tunnel - Tehran (2008 - 2009)



Traffic Tunnel Precast Elements - MKBeton Factory

Tohid Tunnel - Tehran (2008 - 2009)



Moment-Resisting Space Frame
39 m Diameter Spherical
Nishabur (2009)



Assorted Architectural Concrete - Flower Boxes



MKB-MBS

MKBeton Modular Building System

Over 110 Structural Components

- Suited for mid-rise and high-rise Structures
- Rapid Process
- One story per week
- Large Panel Design





Residential Large Panel MKB-MBS

Vanoush - Mazandaran (2005)



Precast Dormitory

MK Beton Modular Building System (Licensed by BHRC)

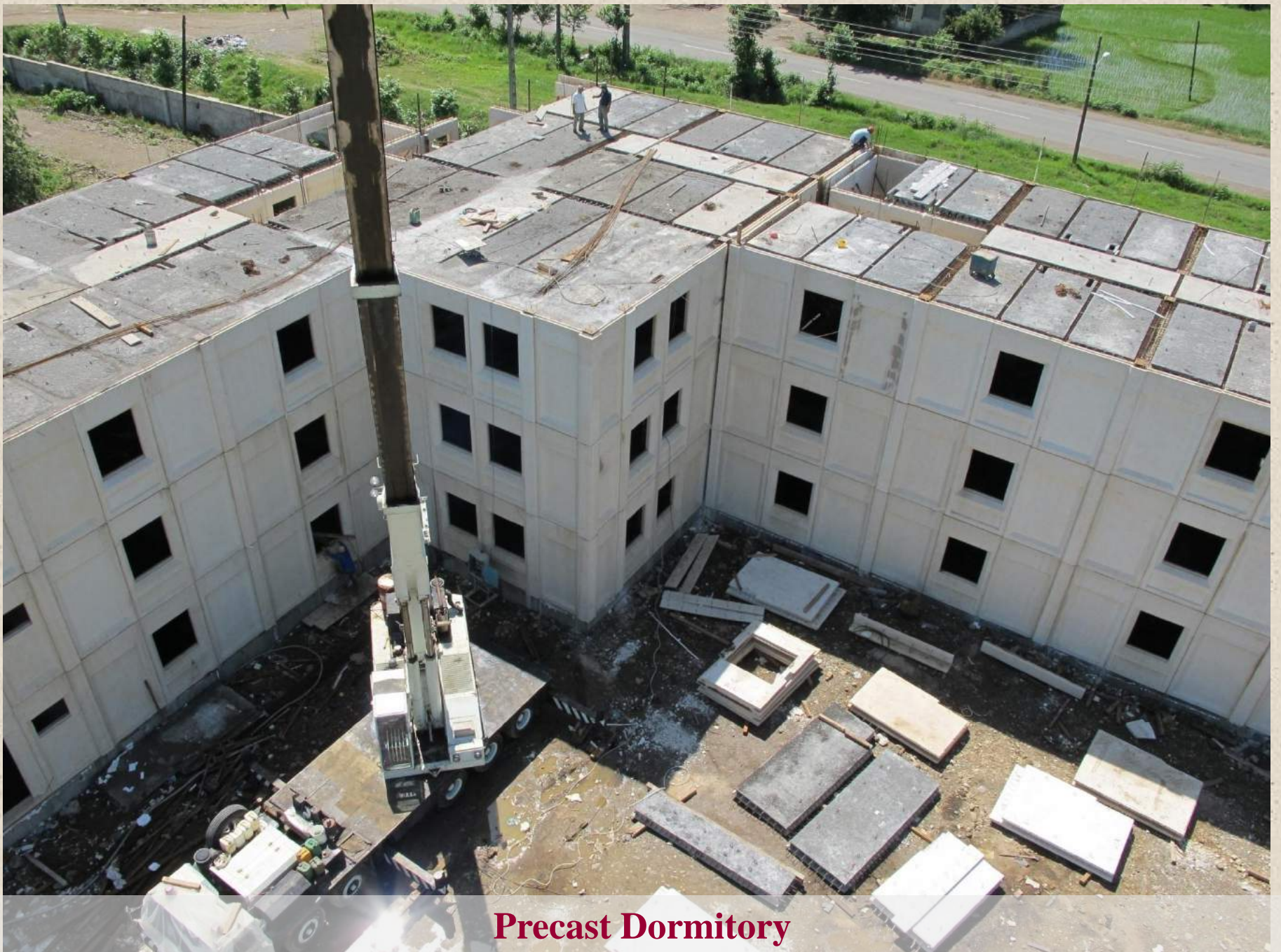
Fouman - Guilan (2011)



Precast Dormitory

MK Beton Modular Building System (Licensed by BHRC)

Fouman - Guilan (2011)



Precast Dormitory

MK Beton Modular Building System (Licensed by BHRC)

Fouman - Guilan (2011)



Precast Dormitory

MK Beton Modular Building System (Licensed by BHRC)

Fouman - Guilan (2011)



Precast Culvert

Box Culverts 350cm (w) by 340cm (h) by 240cm (l)

Tehran-Hakimieh (2012)



Precast Culvert

Box Culverts 350cm (w) by 340cm (h) by 240cm (l)

Tehran-Hakimieh (2012)



**Precast Culvert
Box Culverts**

350cm (w) by 340cm (h) by 240cm (l)

Tehran-Hakimieh (2012)



Precast – Pre_stressed Cap Beam
Tehran - SADR Elevated Highway (2012)



Precast – Pre_stressed Cap Beam

Tehran - SADR Elevated Highway (2012)



Precast – Pre_stressed Cap Beam

Tehran - SADR Elevated Highway (2012)



Precast – Pre_stressed Cap Beam

Tehran - SADR Elevated Highway (2012)



Precast – Pre_stressed Cap Beam

Tehran - SADR Elevated Highway (2012)



Precast – Pre_stressed Cap Beam

Tehran - SADR Elevated Highway (2012)



Precast – Pre_stressed Cap Beam
Tehran - SADR Elevated Highway (2012)

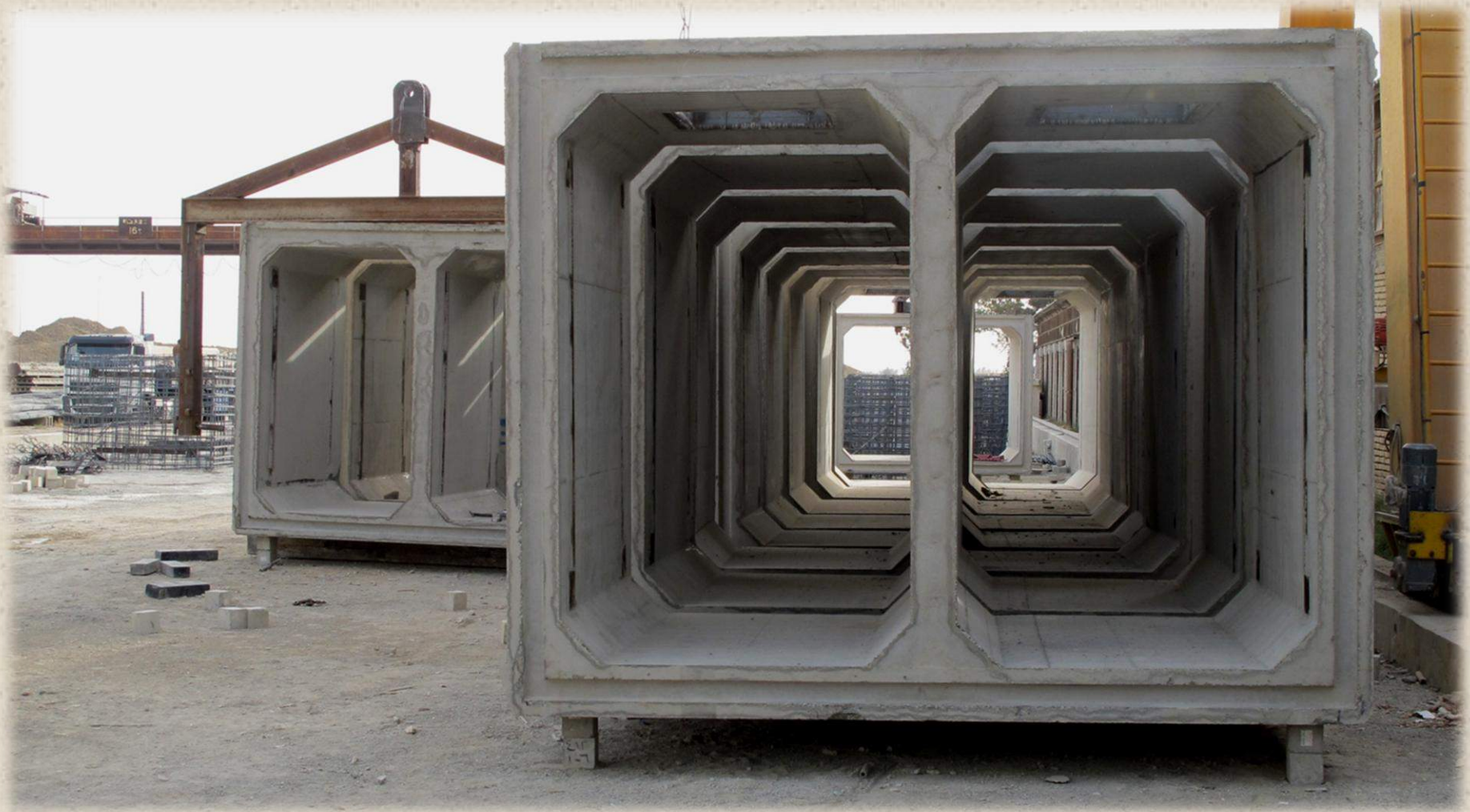


**Precast Culvert
Box Culverts**

(twin chamber)

**Hessarak - Alborz
(2013)**





Precast Culvert

Box Culverts (twin chamber) - 390cm (w) by 310cm (h) by 220cm (l)

Hessarak - Alborz (2013)



Precast Culvert

Box Culverts (twin chamber) - 390cm (w) by 310cm (h) by 220cm (l)

Hessarak - Alborz (2013)



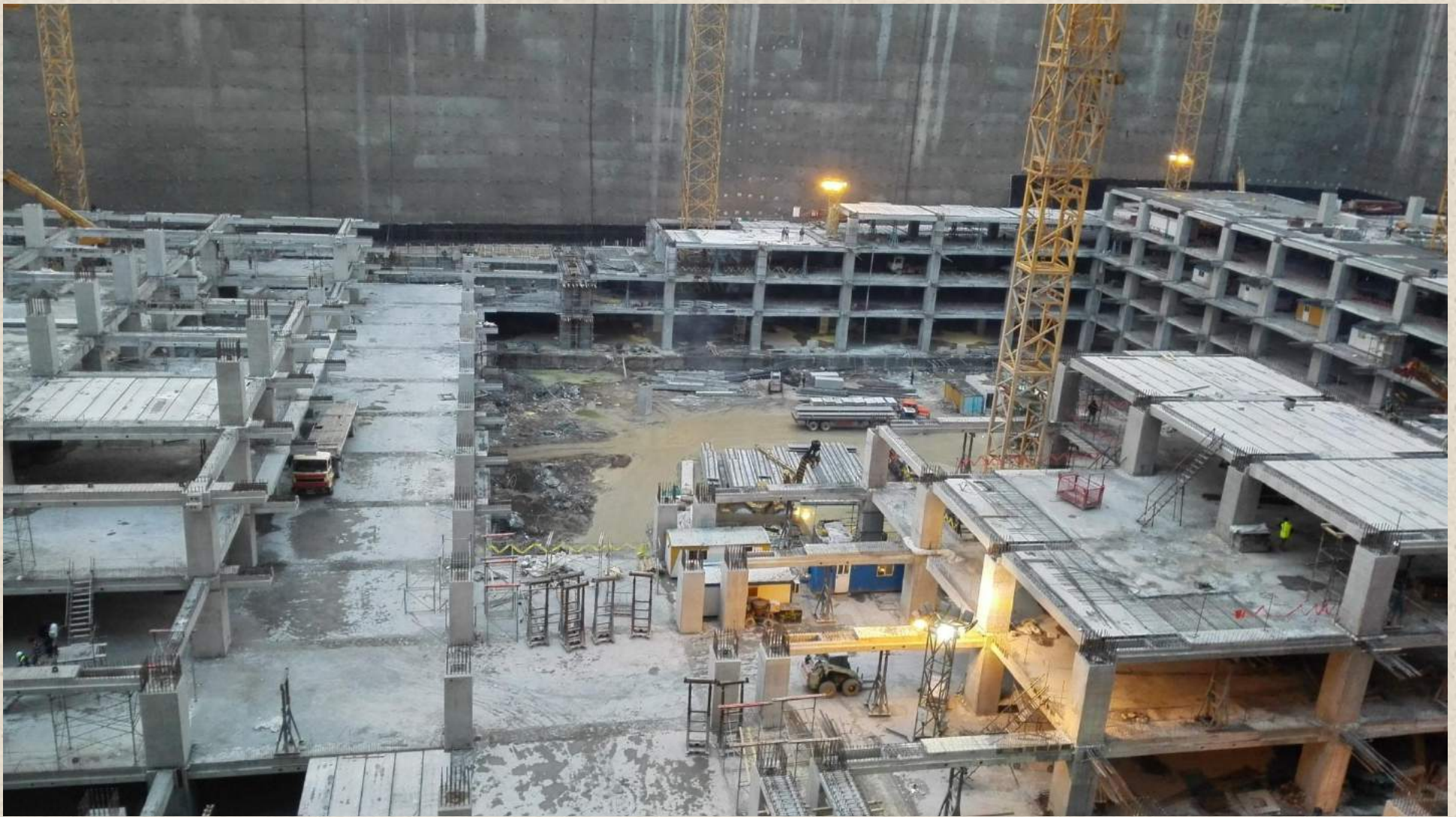
Precast Culvert
Box Culverts (twin chamber)

Hessarak - Alborz (2013)



Rapid ASC (Accelerated Structure Construction)

**Novel Precast Moment Resisting Frame – Parking structure – 60000m²
Iran Mall – Parking 1 (lake) – Tehran District 22 (2016)**



Rapid ASC (Accelerated Structure Construction)

**Novel Precast Moment Resisting Frame – Parking structure – 140000m²
Iran Mall – Parking 2 (West Development) – Tehran District 22 (2017)**



Rapid ASC (Accelerated Structure Construction)

**Novel Precast Moment Resisting Frame – Parking structure – 140000m²
Iran Mall – Parking 2 (West Development) – Tehran District 22 (2017)**



Rapid ASC (Accelerated Structure Construction)

**Novel Precast Moment Resisting Frame – Parking structure – 140000m²
Iran Mall – Parking 2 (West Development) – Tehran District 22 (2017)**

**MKBeton (PJS Co.)
Prefabrication Solutions**

**Reinforced Concrete
Modular Cabins**



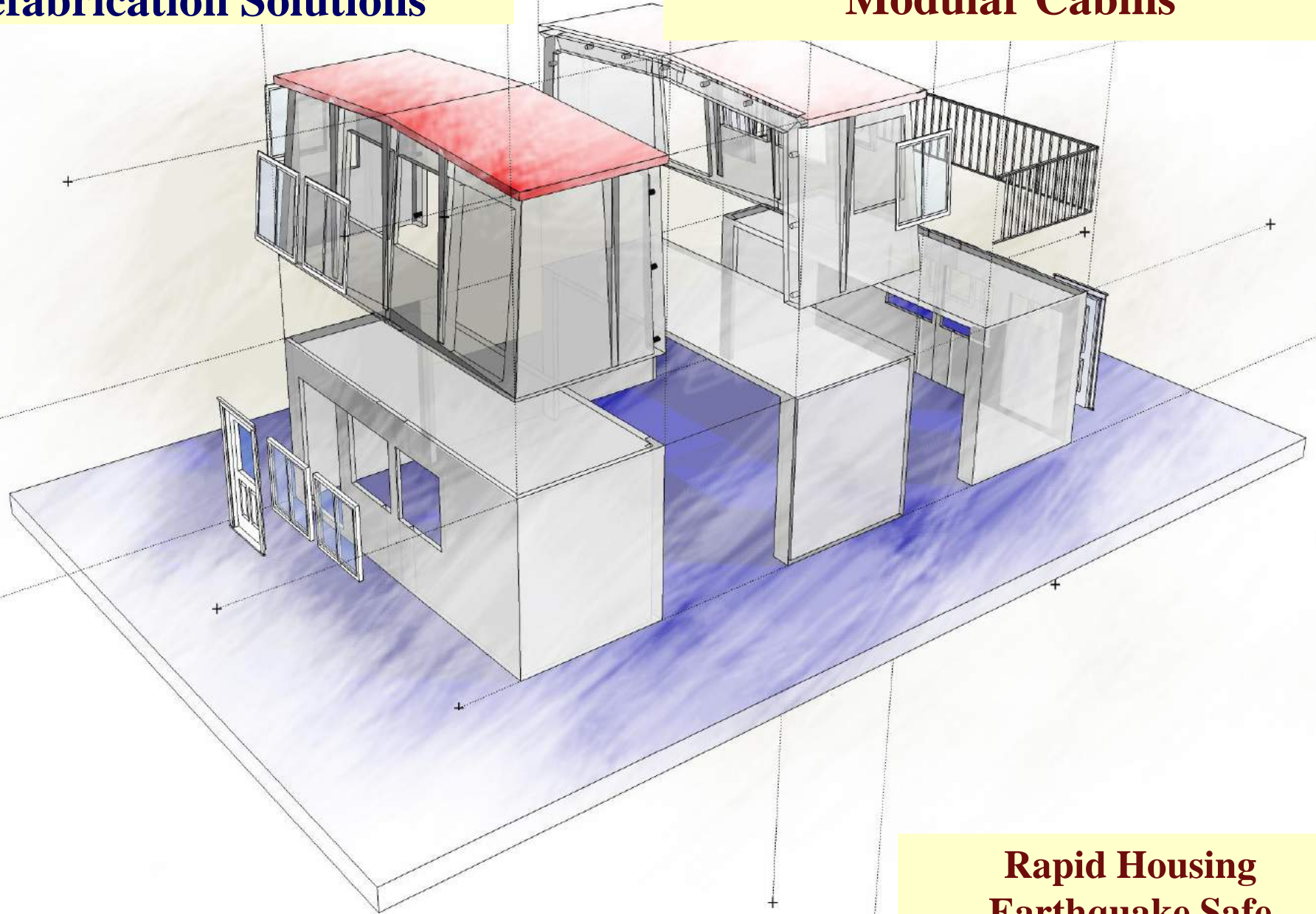
**Rapid Housing
Earthquake Safe**

**Fast Production
Fast Installation
Fast Development
Cost Effective
Temporary &
Permanent Housing**



**MKBeton (PJS Co.)
Prefabrication Solutions**

**Reinforced Concrete
Modular Cabins**



**Rapid Housing
Earthquake Safe**



**Reinforced Concrete
Modular Cabins**

**MKBeton (PJS Co.)
Prefabrication Solutions**

**Reinforced Concrete
Modular Cabins**



**Rapid Housing
Earthquake Safe**

**MKBeton (PJS Co.)
Prefabrication Solutions**

**Reinforced Concrete
Modular Cabins**



**Rapid Housing
Earthquake Safe**

**MKBeton (PJS Co.)
Prefabrication Solutions**

**Reinforced Concrete
Modular Cabins**



**Rapid Housing
Earthquake Safe**

**MKBeton (PJS Co.)
Prefabrication Solutions**

**Reinforced Concrete
Modular Cabins**



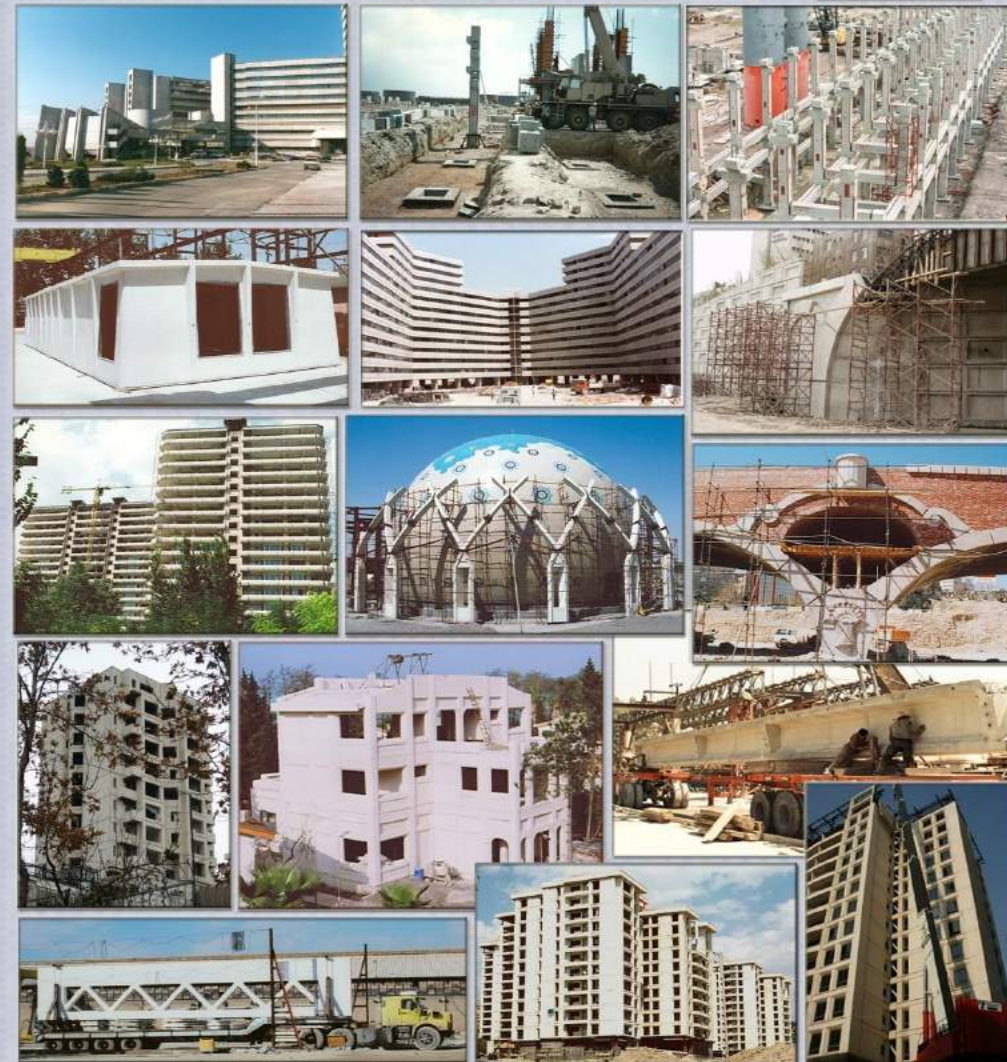
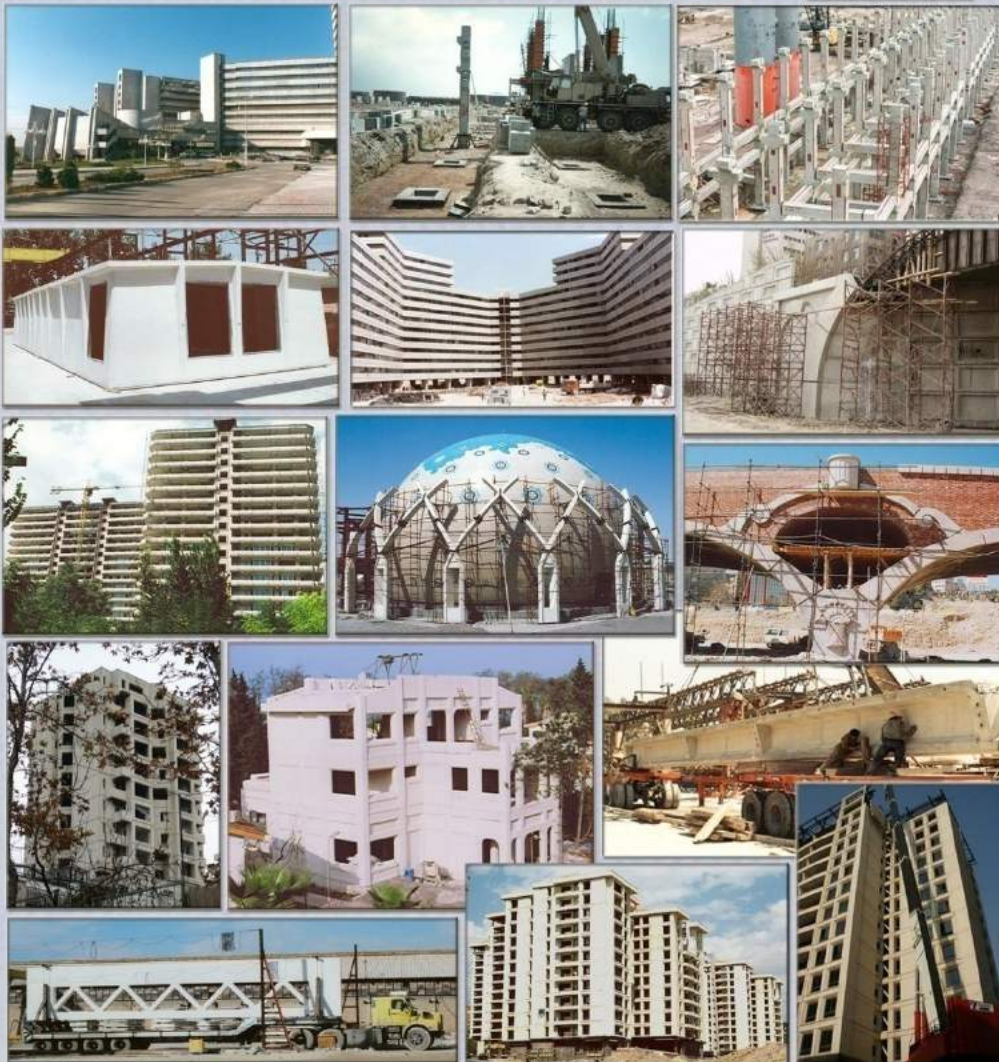
Educational Complex

**Rapid Housing
Earthquake Safe**

سازه های پیش ساخته و پیش تنیده بتنی
 سازه های خاص (پیش ساخته و درجا)
 طراحی و قالب سازی قطعات خاص (پیش ساخته و درجا)
 نمای بتن اکسپوز، شسته و سند بلاست



سازه های پیش ساخته و پیش تنیده بتنی
 سازه های خاص (پیش ساخته و درجا)
 طراحی و قالب سازی قطعات خاص (پیش ساخته و درجا)
 نمای بتن اکسپوز، شسته و سند بلاست



www.MKBeton.com

Tel/Fax: 0098-21-65605870-1

استان تهران - شهریار - باغستان - سعید آباد - بلوار شهید بهشتی -
 خیابان وحید یک پلاک ۶ کدپستی: ۳۳۵۹۶۳۱۲۶۱