



# MKBeton Co. Modular Building System MBS

A Prefabricated Large Panel Reinforced  
Concrete Structural System

# MBS- Modular Building System

---

- Integrated structural reinforced concrete system
- Designed and implemented with MODULAR prefabricated elements
- Designed based on Large Panel structural system
- Conform to actual building codes and international standards

# MBS- Modular Building System

---

- System includes prefabricated:
  1. Foundations
  2. Tie-Beams
  3. Walls (Facades, Inner Walls, Door Frames and window frames )
  4. Hollow Core Slabs
  5. Parapets

All components are wet-connected  
with steel reinforcement

# MBS- Modular Building System

---

- Facades and walls:
  1. Structural components
  2. Modules of 90cm in width
  3. Story height typical 320cm (can vary)
  4. Modules of 90, 180, 270, 360 and 540cm
  5. Includes Arch type elements

# MBS- Modular Building System

---

- Slabs and Roofs

1. 25cm thick Hollow Core Slabs
2. One-way design
3. Lateral wet/reinforced
4. Modules of up to 720cm in length (can vary)



# MKBeton Co. Modular Building System Modeler MBS-Modeler

An AutoCAD based application for rapid and accurate Design, Estimation and Inventory for MKBeton MBS prefabricated structure Projects

# MBS- Modeler

---

- Based on AutoCAD 2002 and 2004
- Programmed in AutoLisp
- Ease of use
- Rapid implementation
- Step by step GUI interaction with users

# MBS- Modeler

---

- Application asks the basics (dimensions, # of stories, story heights etc...) and proceeds
- Complete 3D models of element compiled a priori and accessible
- User is free to select and call each element in desired orders
- Automated Global 3D modeling at the end



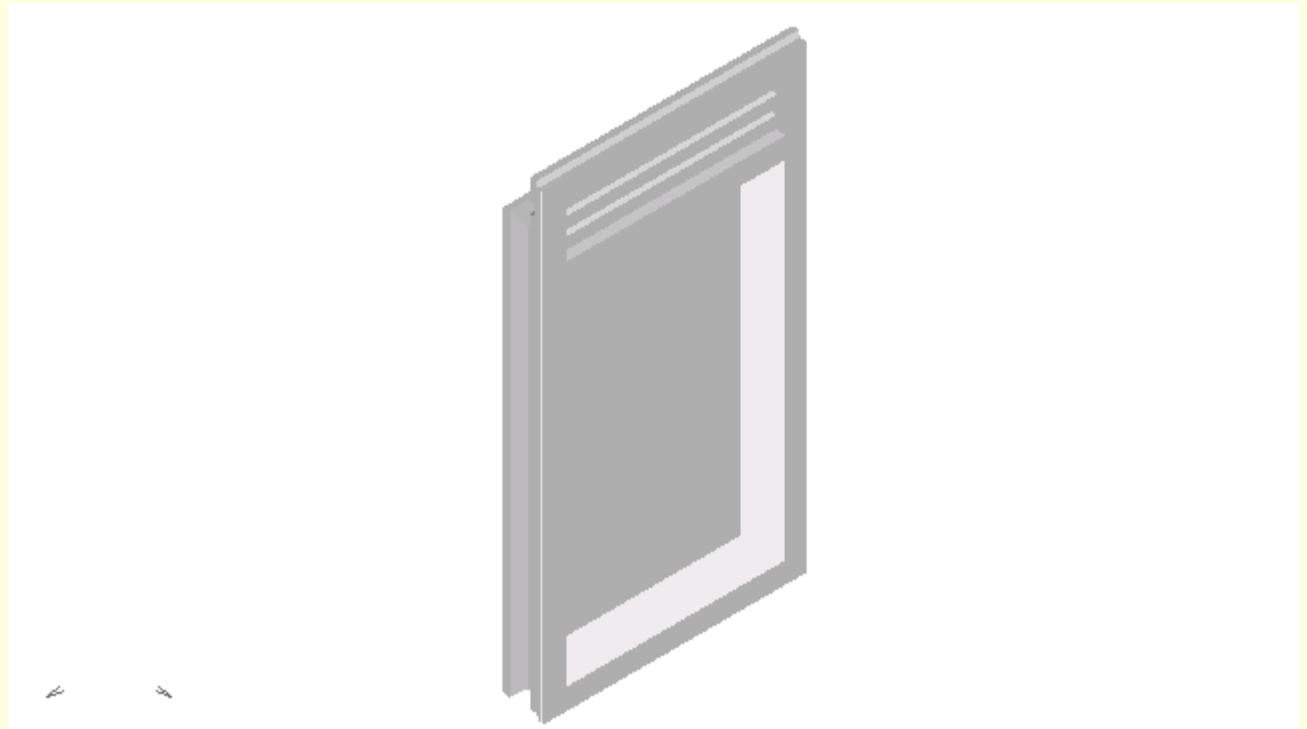
# MBS- Modeler

---

- Our system contains hundreds of various components for the MBS product
- The following five elements are illustrated as an example

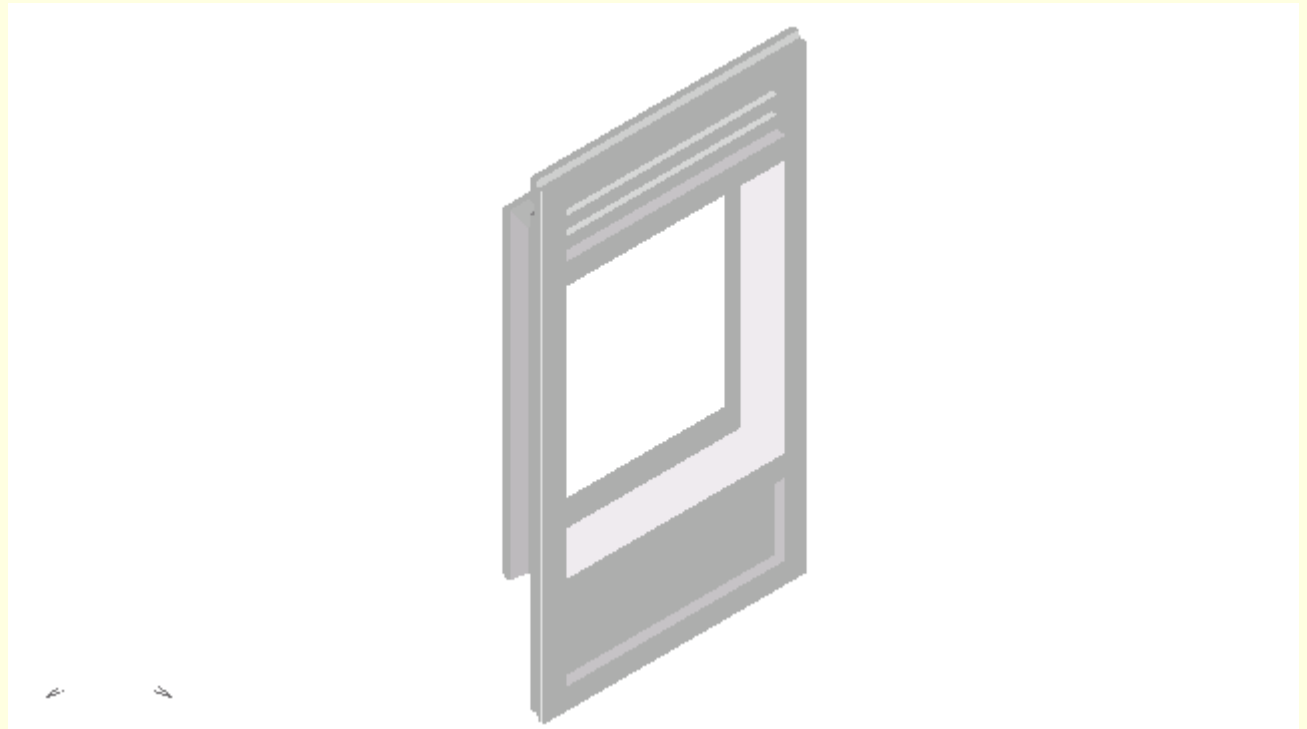
# MBS- Modeler

- A typical façade wall (module x 2 = 180cm)



# MBS- Modeler

- A typical façade window frame (module x 2 = 180cm)



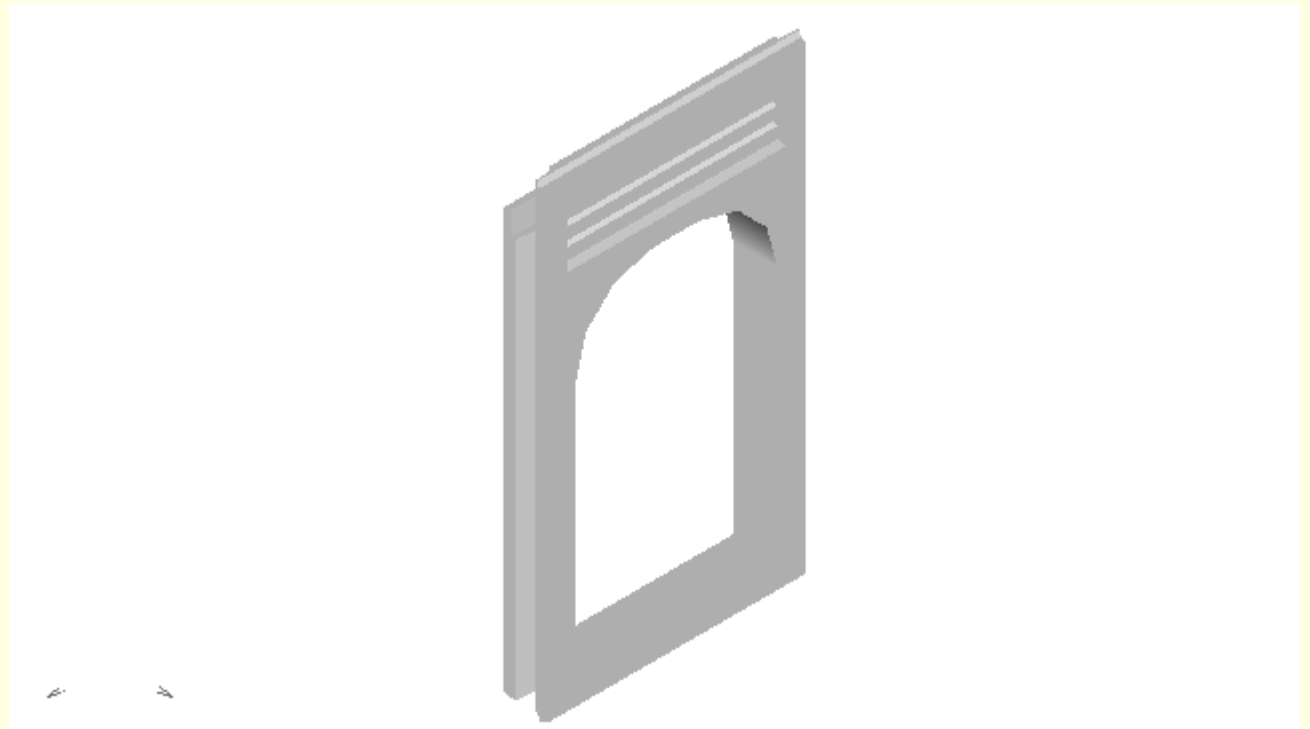
# MBS- Modeler

- A typical façade window frame (module x 2 = 180cm)



# MBS- Modeler

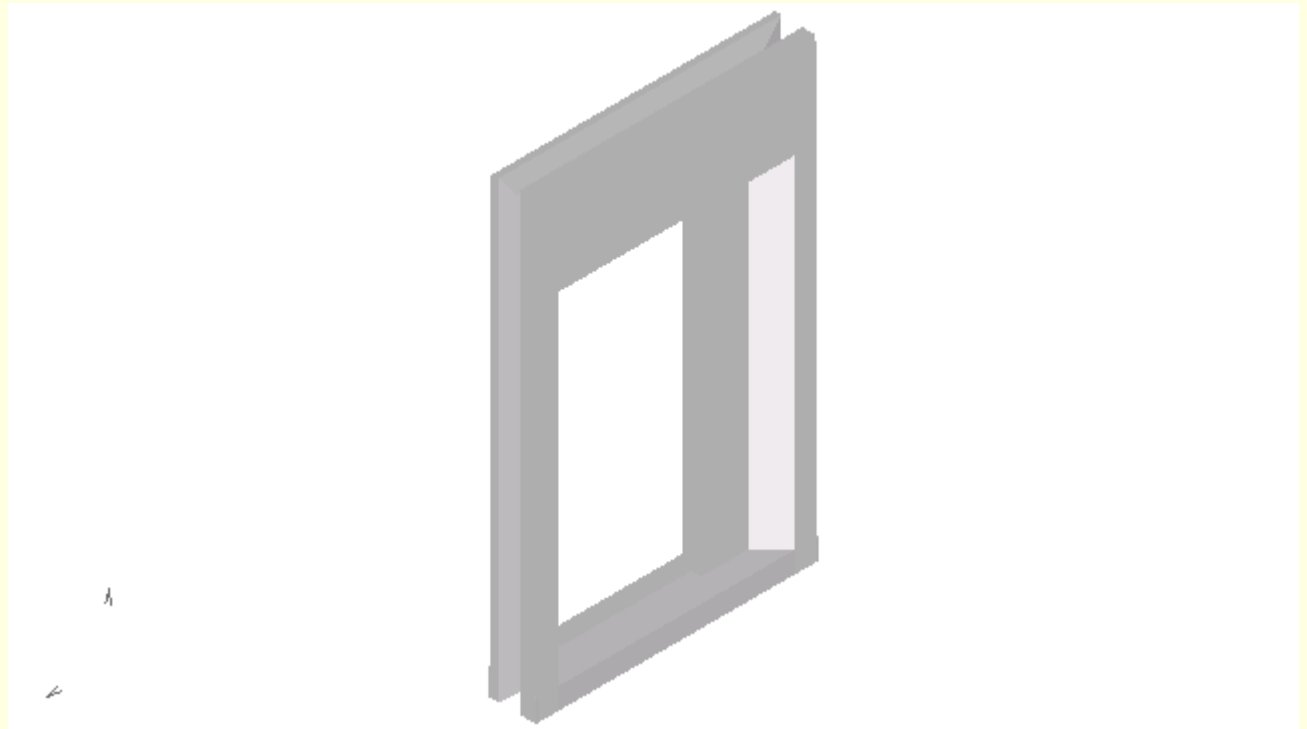
- A typical façade arch frame (module x 2 = 180cm)



# MBS- Modeler

---

- A typical inner door frame (module x 2 = 180cm)



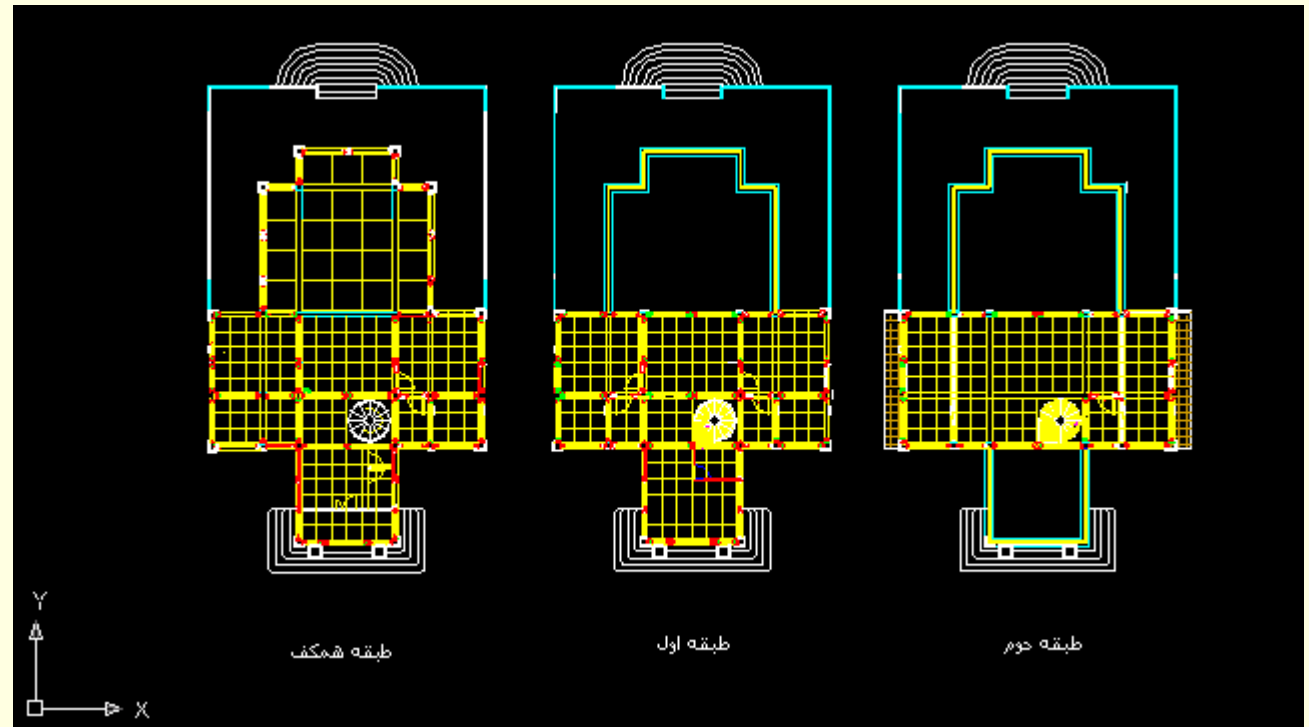
# MBS- Modeler

---

- To briefly illustrate the steps of the implementation the following example is provided
- The building is a 3-story MBS structure
- The building foot print is about 250 square meters
- Inclined roofs are implemented
- For simplicity the inner walls are excluded

# MBS- Modeler

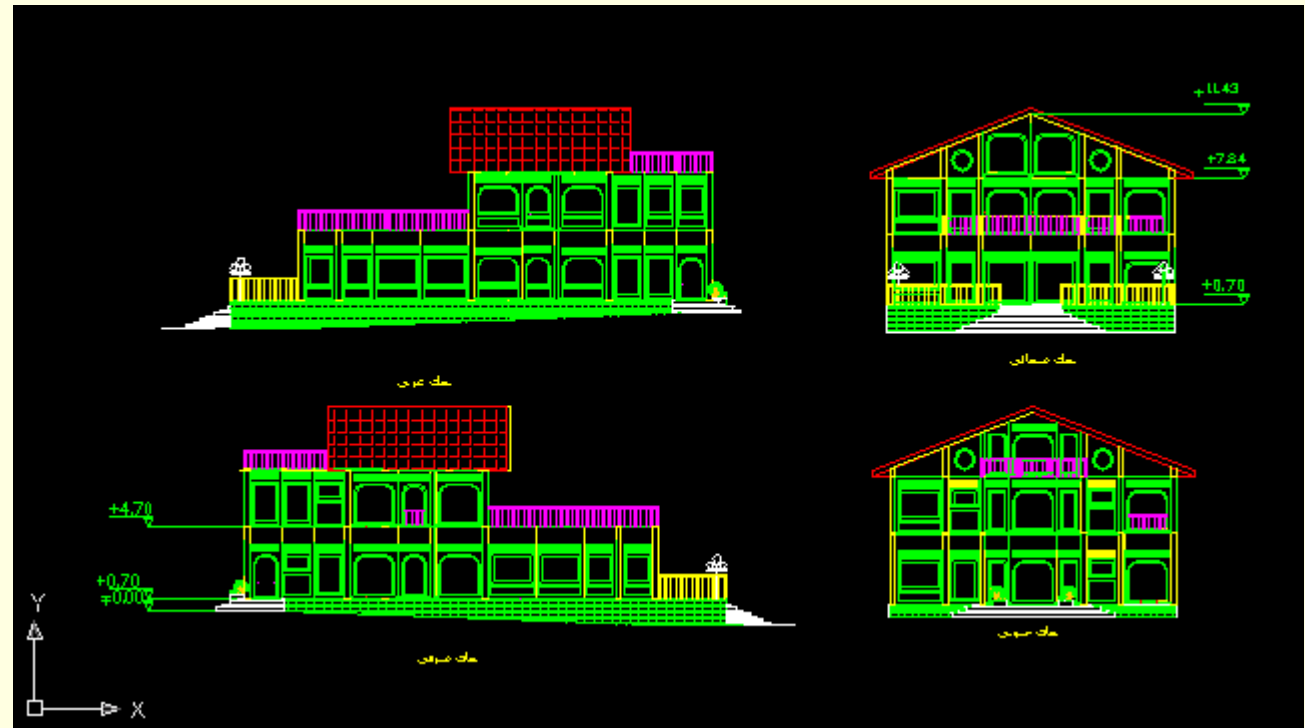
- Example plan drawings





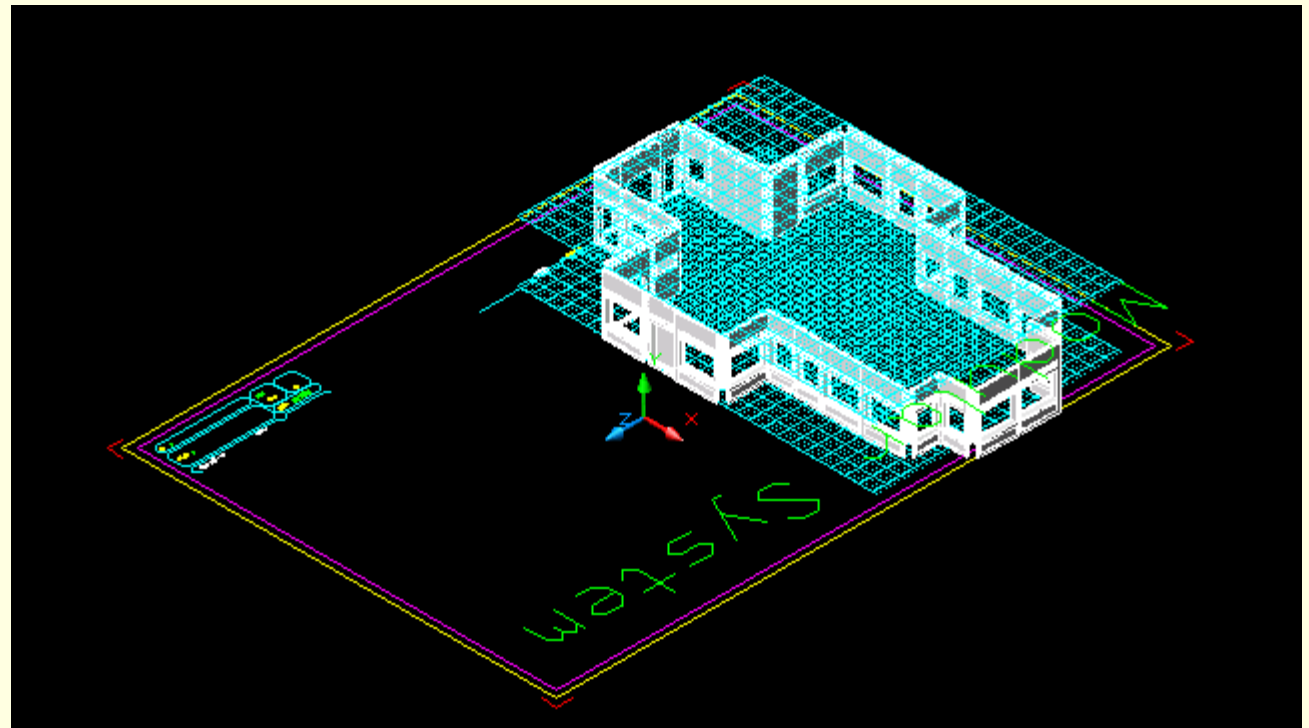
# MBS- Modeler

- Example façade/elevation



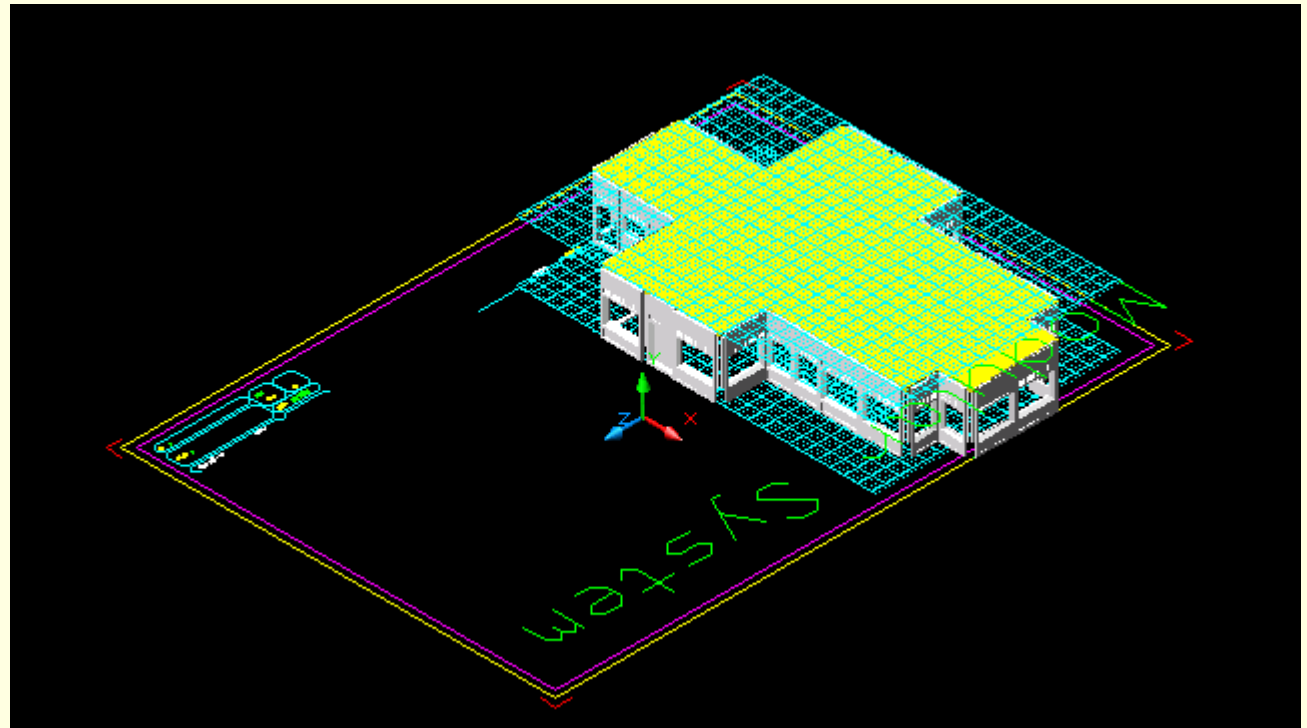
# MBS- Modeler

- Ground level facades installation



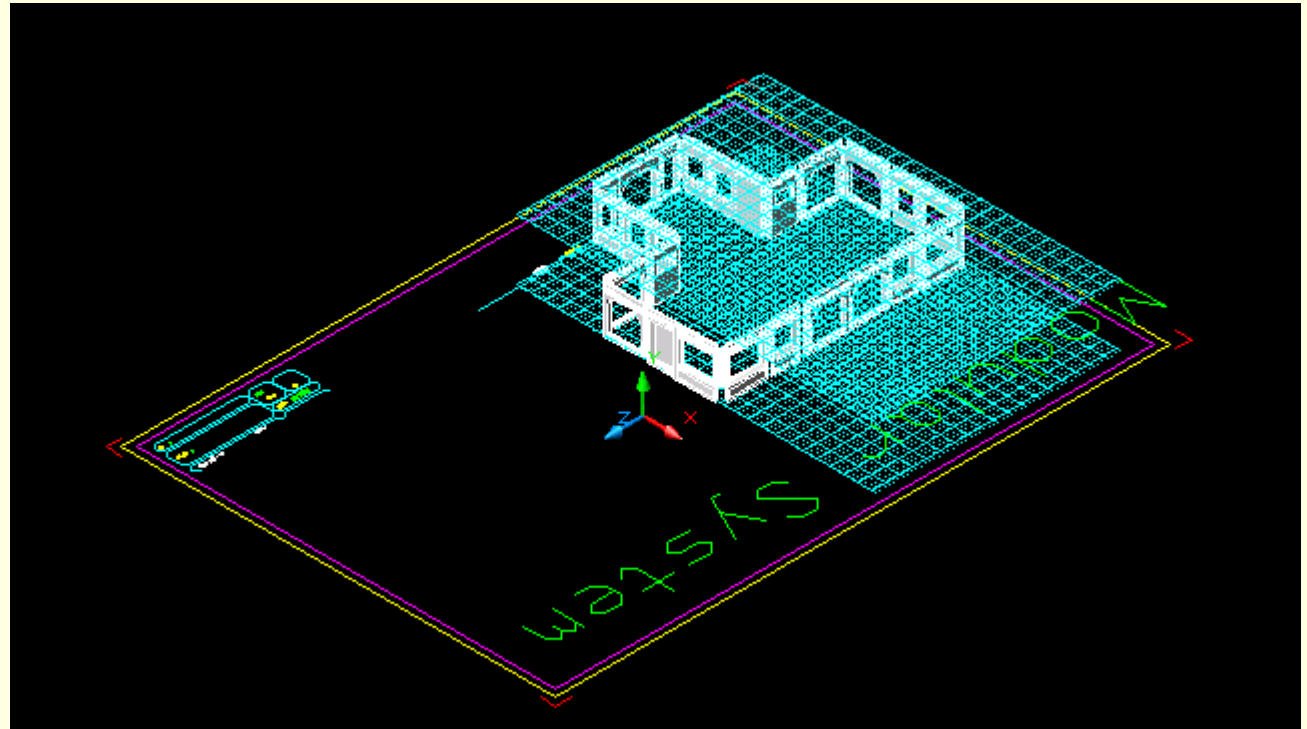
# MBS- Modeler

- First layer of slabs



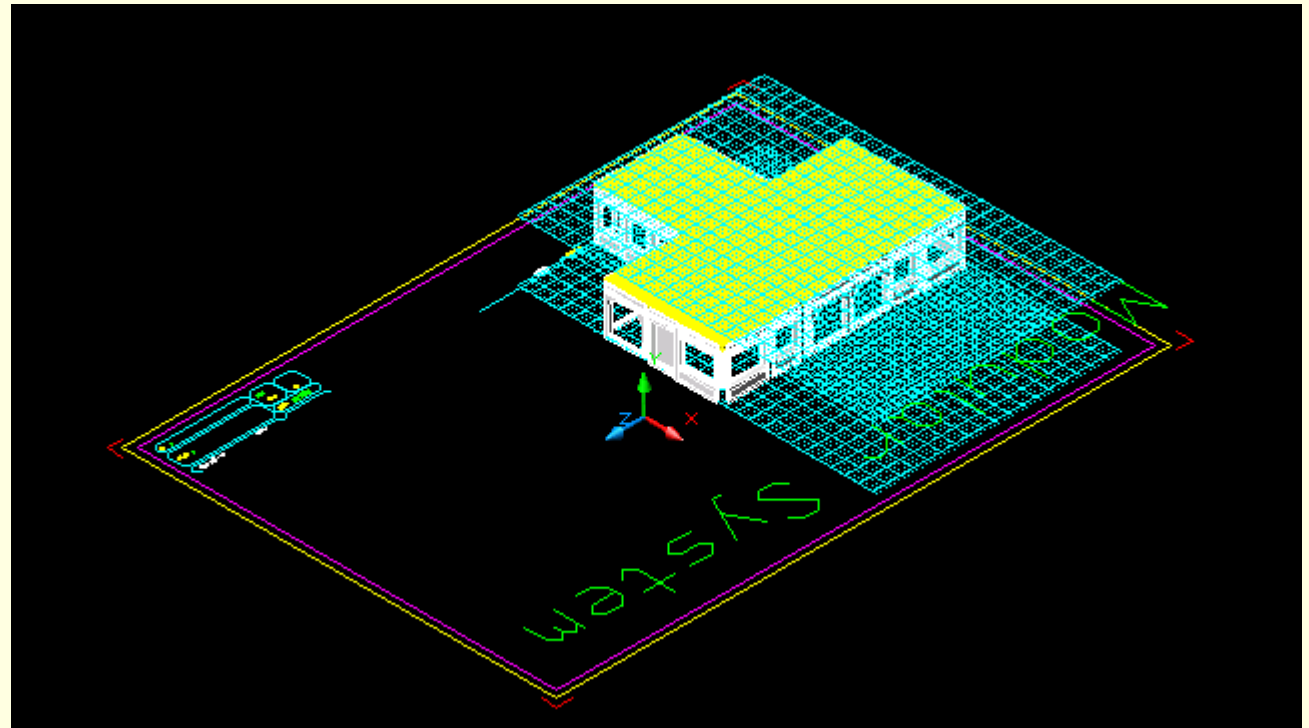
# MBS- Modeler

- First floor façade installation



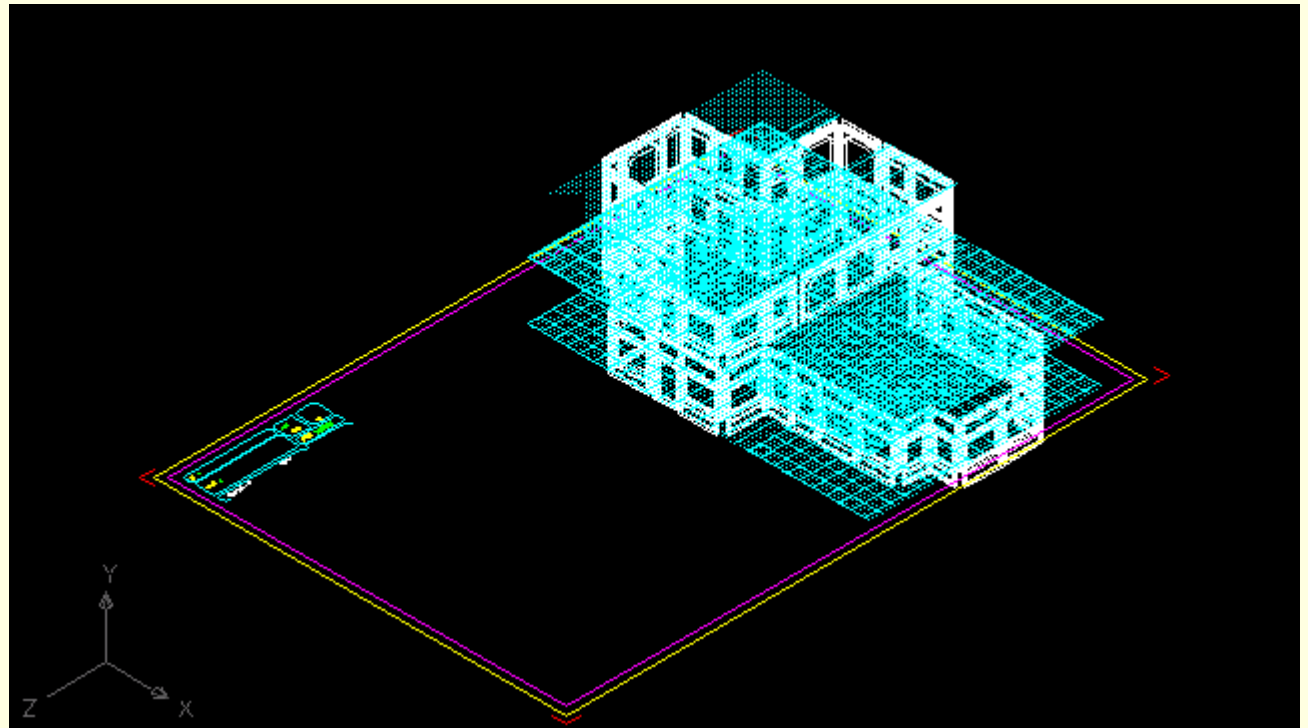
# MBS- Modeler

- Related slab covering



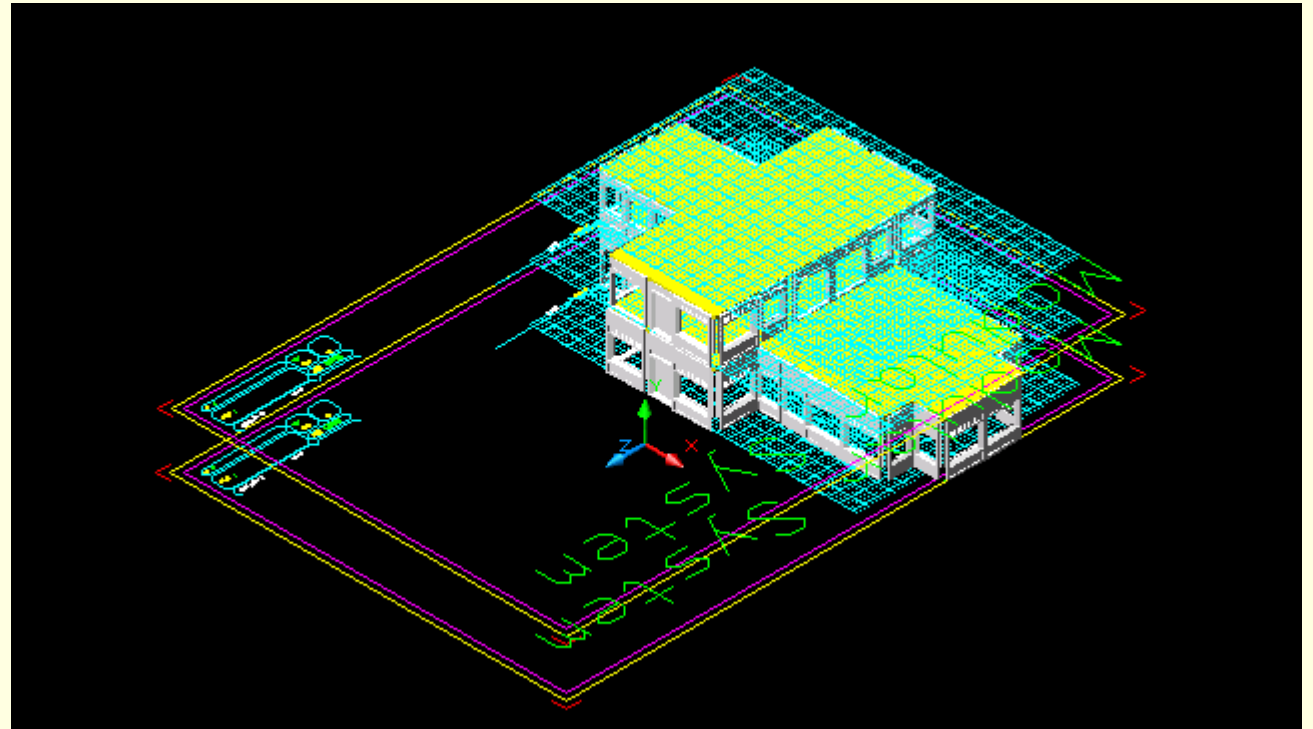
# MBS- Modeler

- First two stories installed



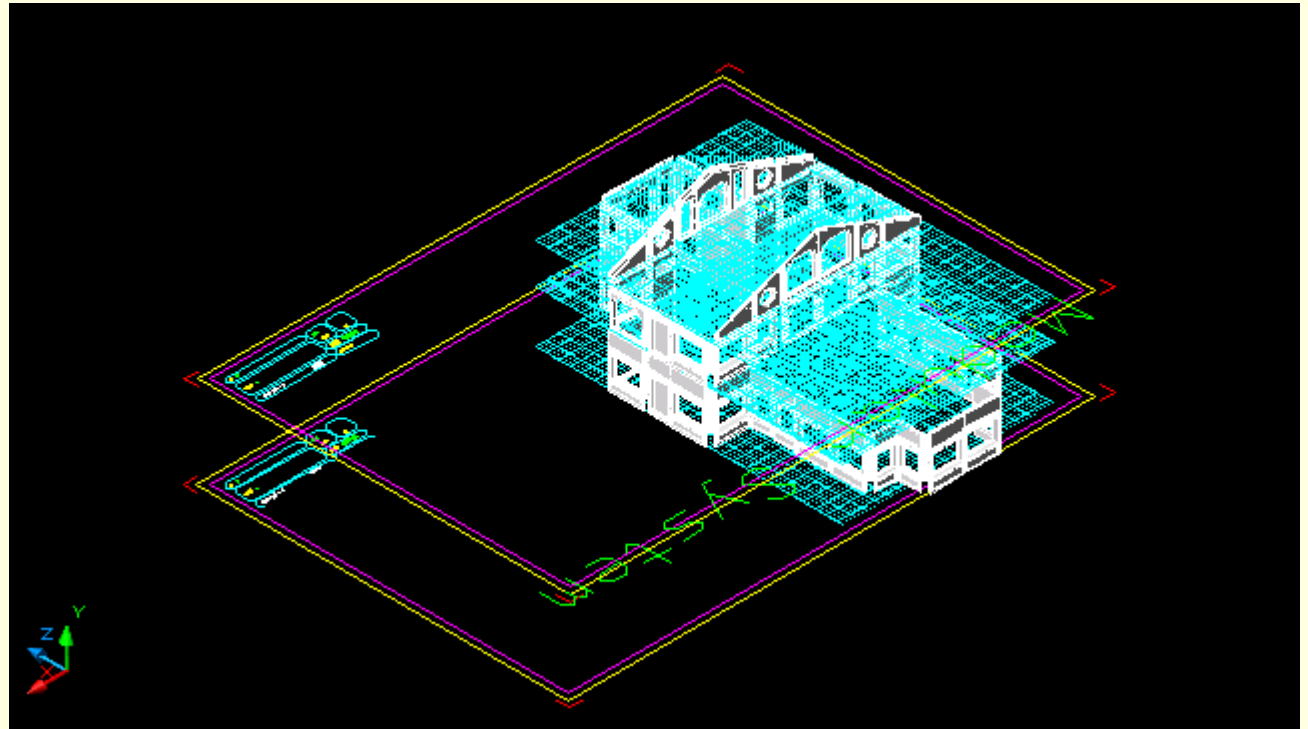
# MBS- Modeler

- Completed two stories



# MBS- Modeler

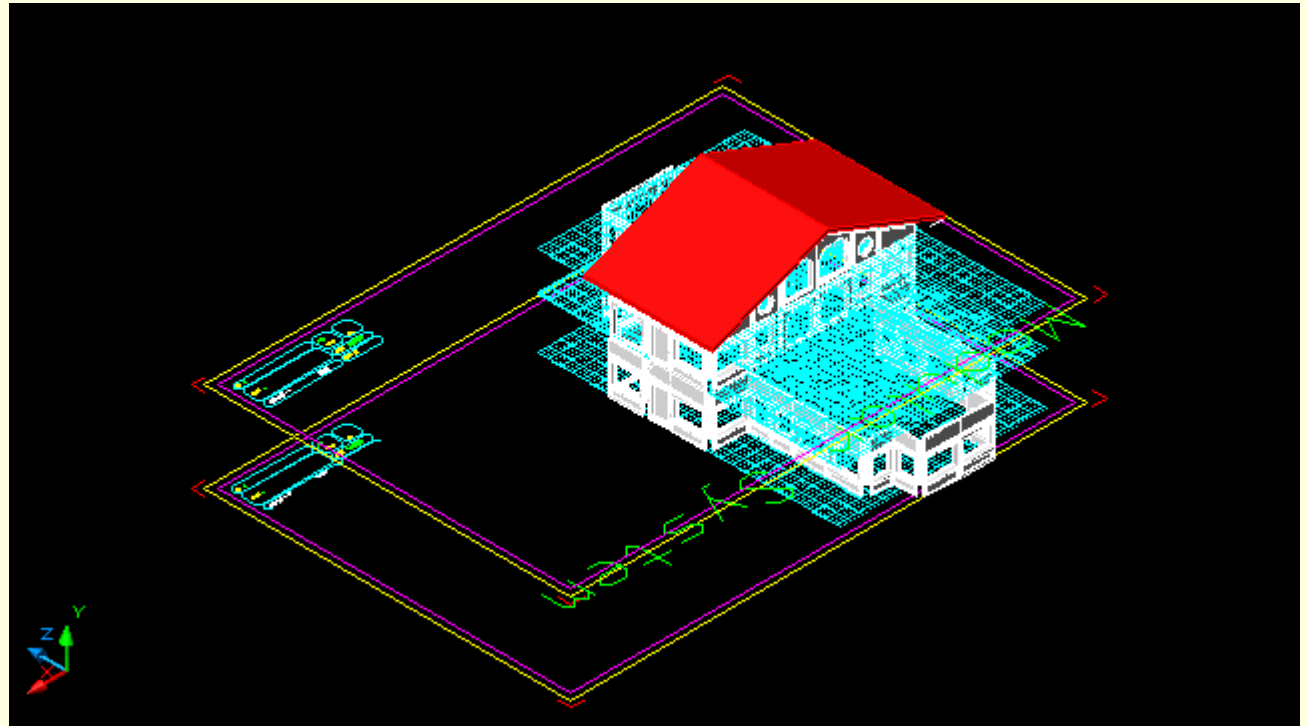
- Third story erection





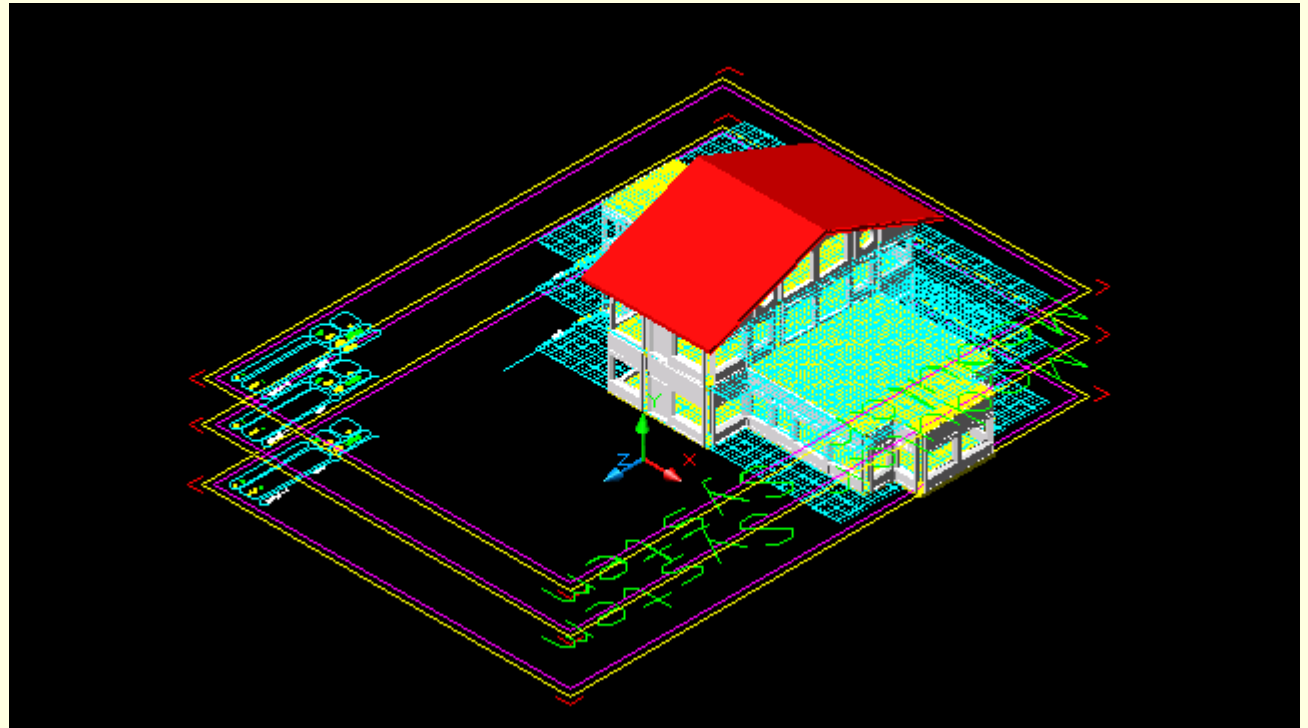
# MBS- Modeler

- Roof erected



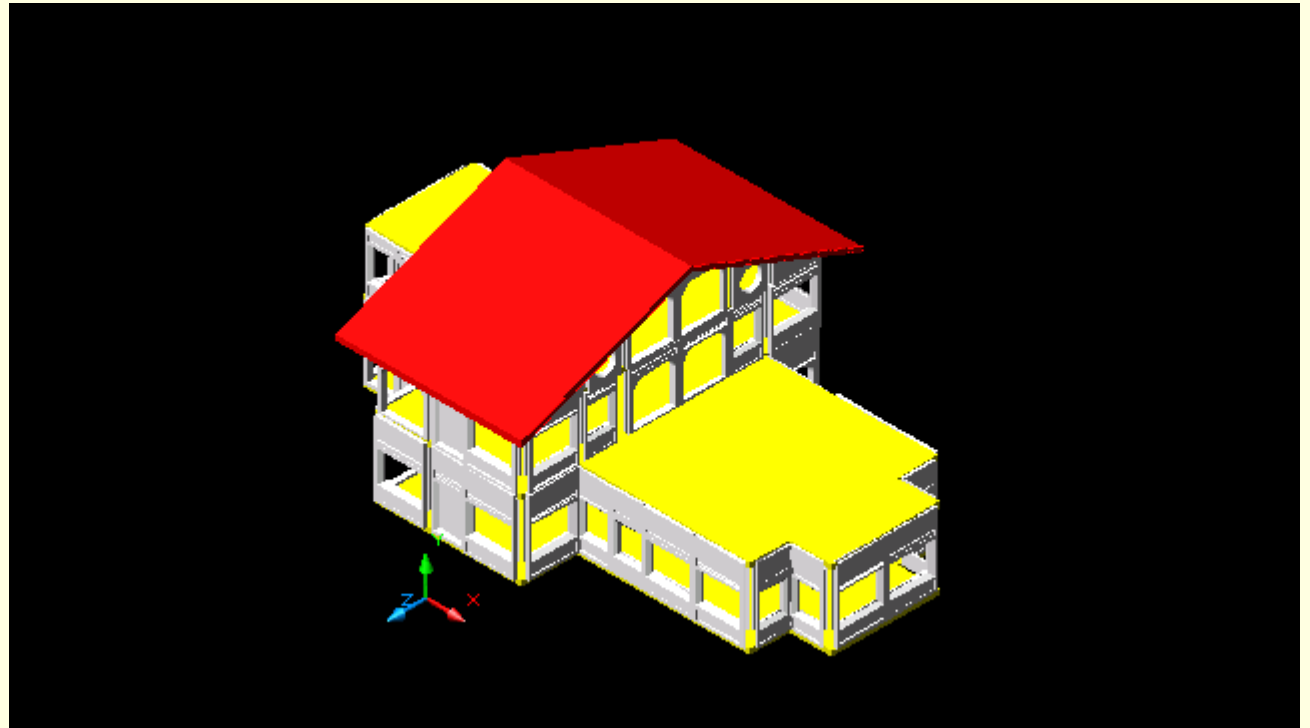
# MBS- Modeler

- Complete installation



# MBS- Modeler

- Completed project



# The End

---

